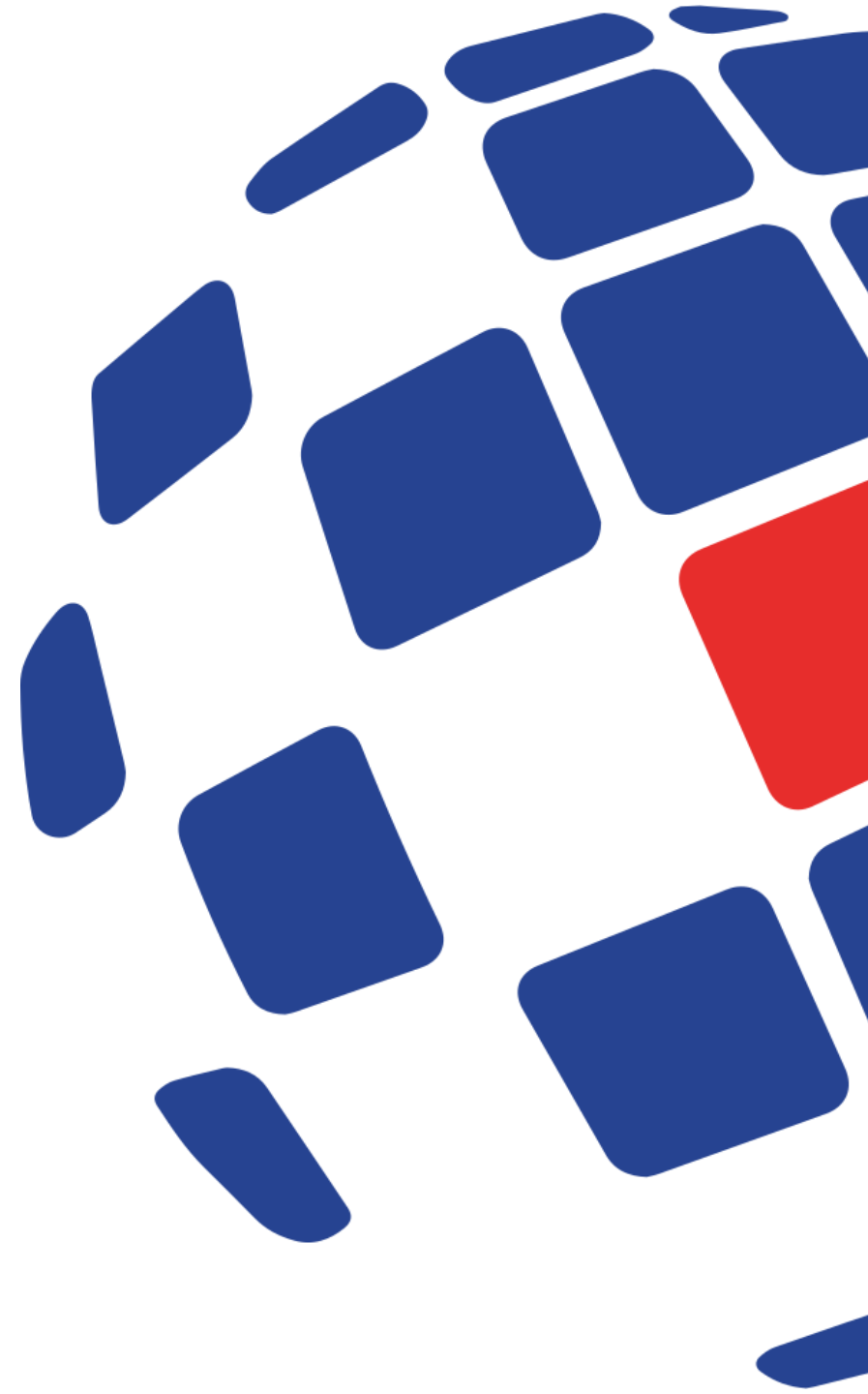




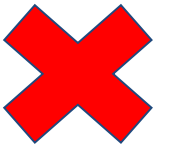
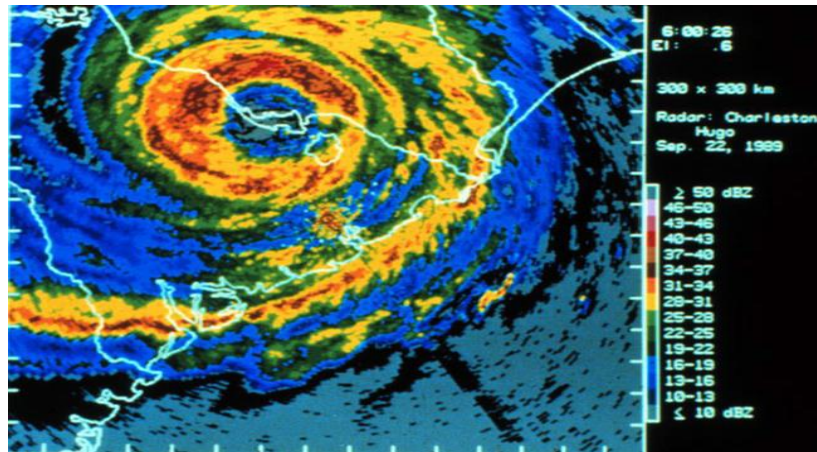
October 2023 - Barbados

Introduction to Raster Data



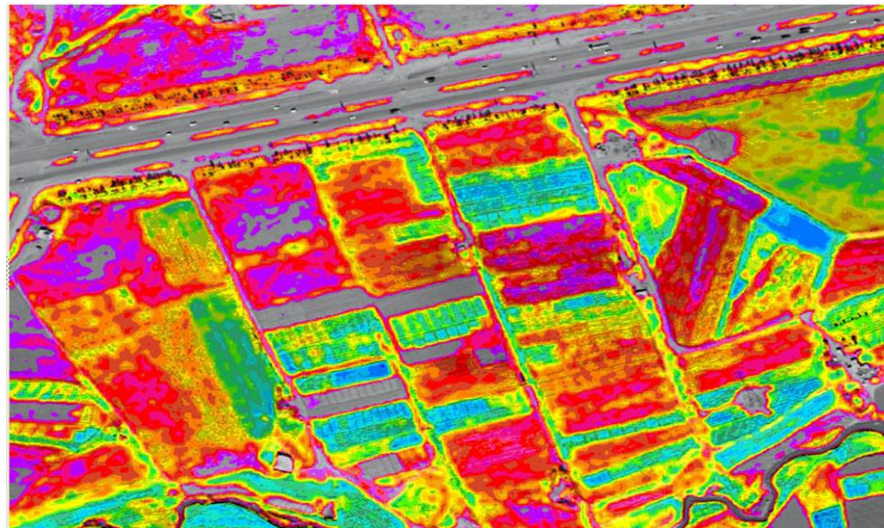
Introduction

- Introduction to Raster Data
- How this can be viewed in QGIS
- How to customize raster styling

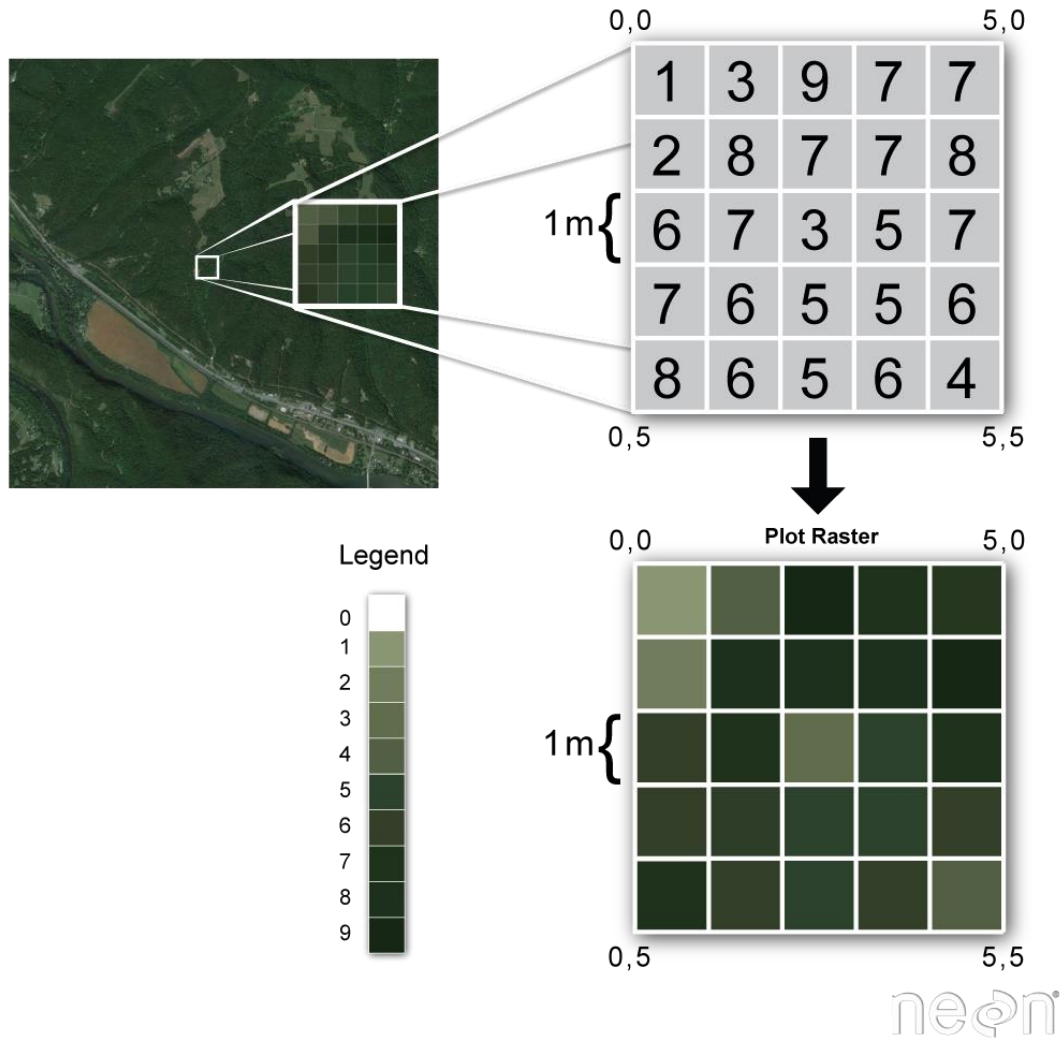


Raster Data

- Raster data are images that show a continuous area of the earth's surface.
- Scale, position, and orientation information allow raster data to be presented in QGIS.



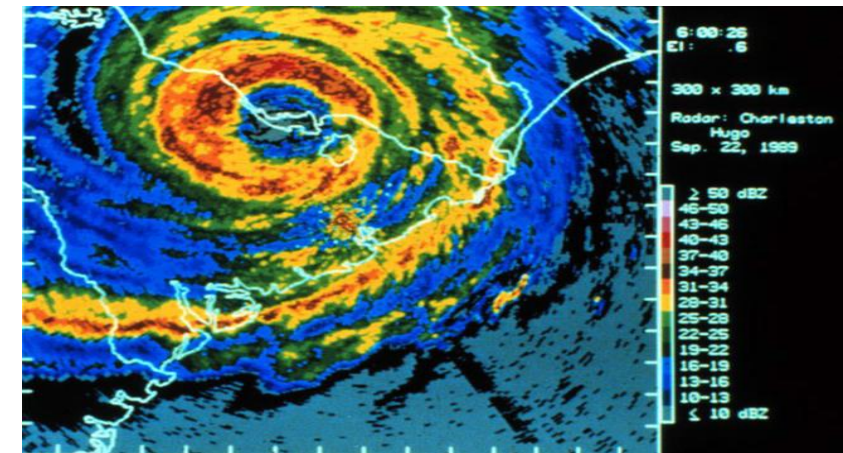
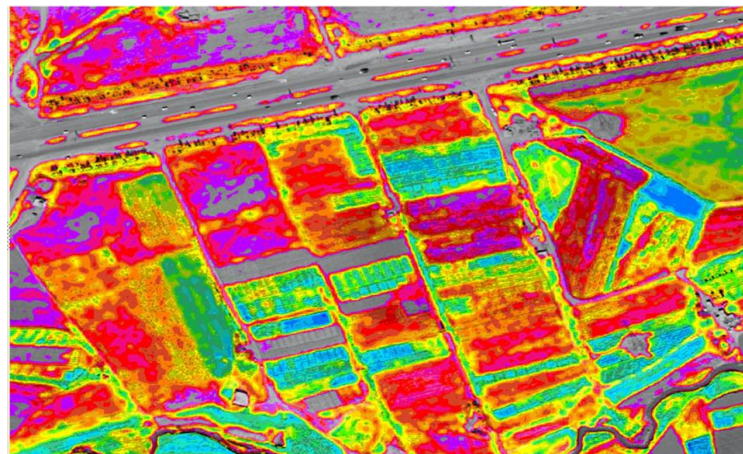
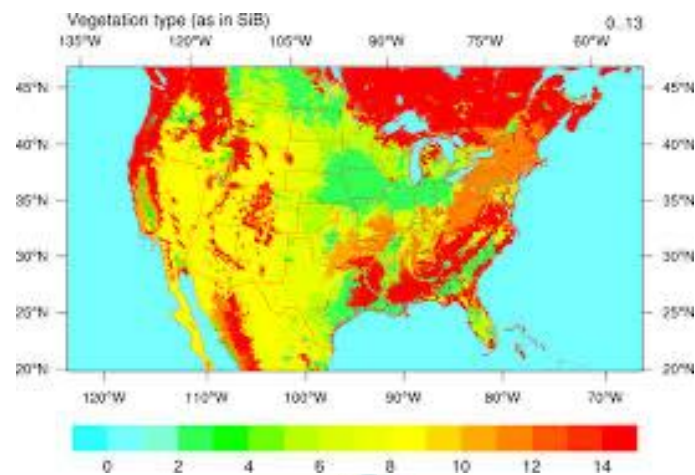
Raster Data



- Raster data are made of pixels over an area
- Each pixel contains value data, coloured according to the GIS legend
- The different values may tell you something about the location.

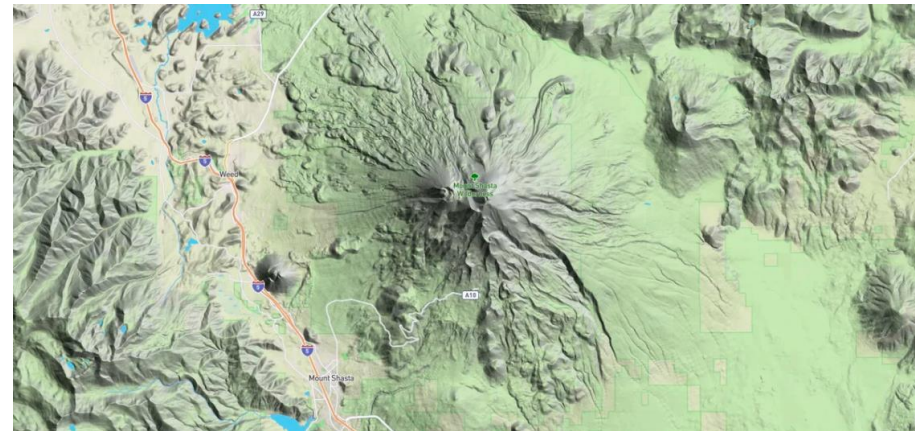
Raster Data Example (1/3)

- Vegetation cover type
- Surface wetness map
- Air moisture



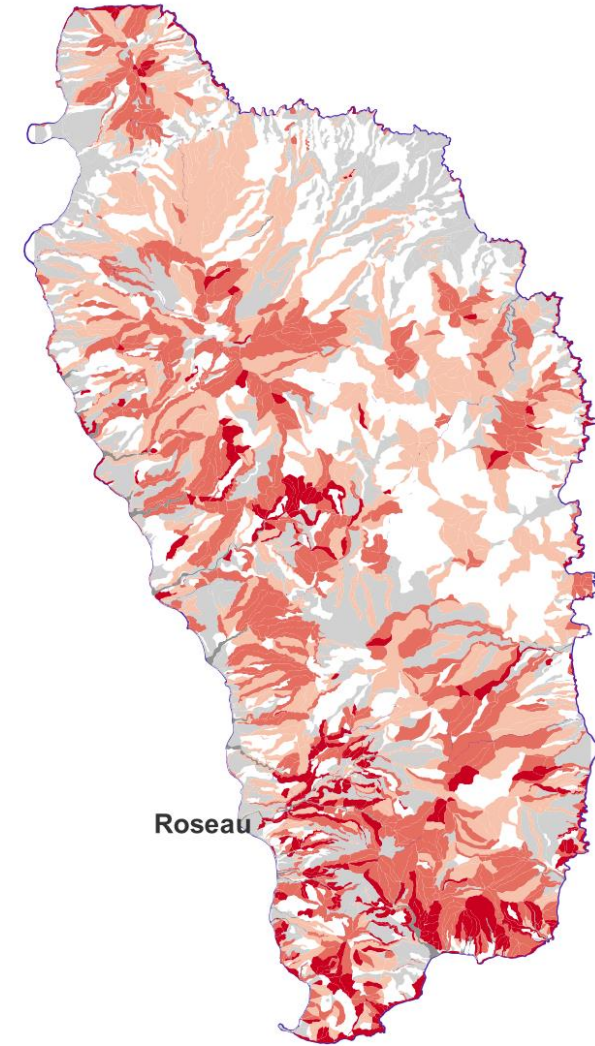
Raster Data Example (2/3)

- Digital Elevation Model (DEM)
- Slope steepness and aspect (hill shading)



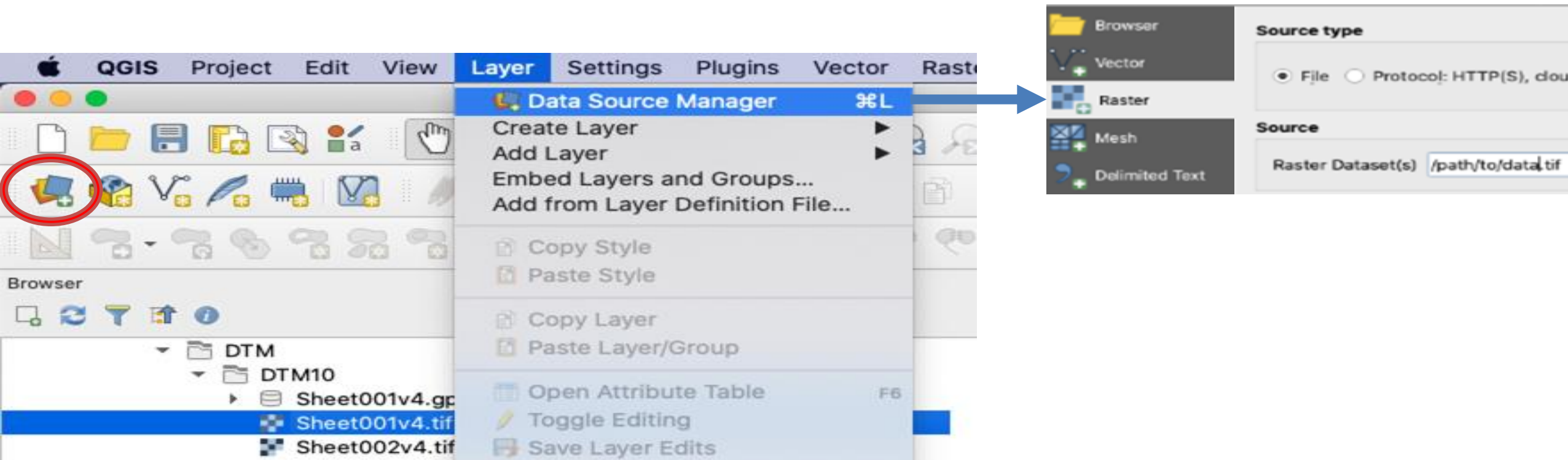
Raster Data Example (3/3)

- Landslide Hazard Map
- Slope steepness and aspect (hill shading)



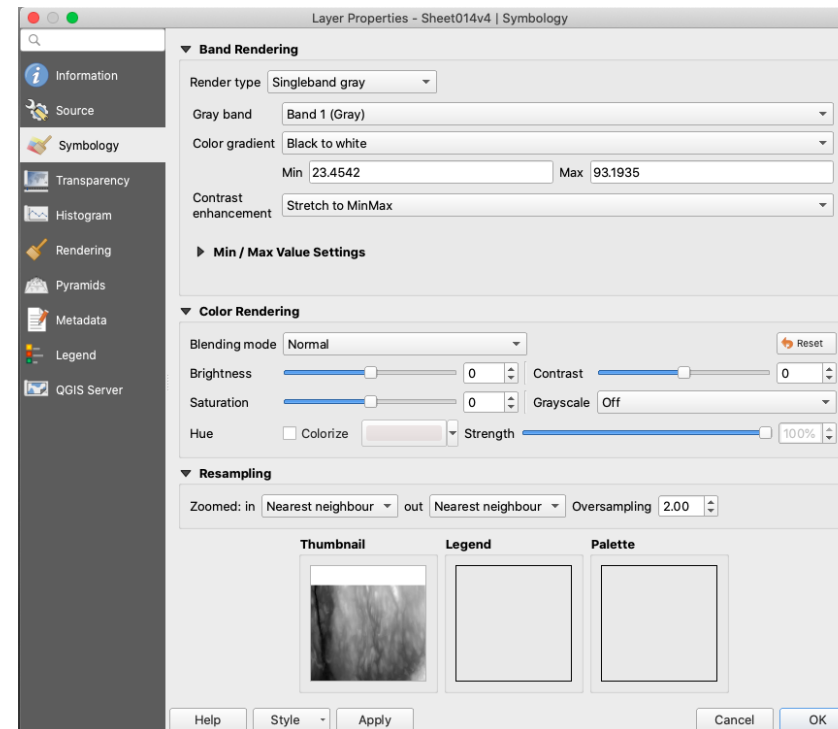
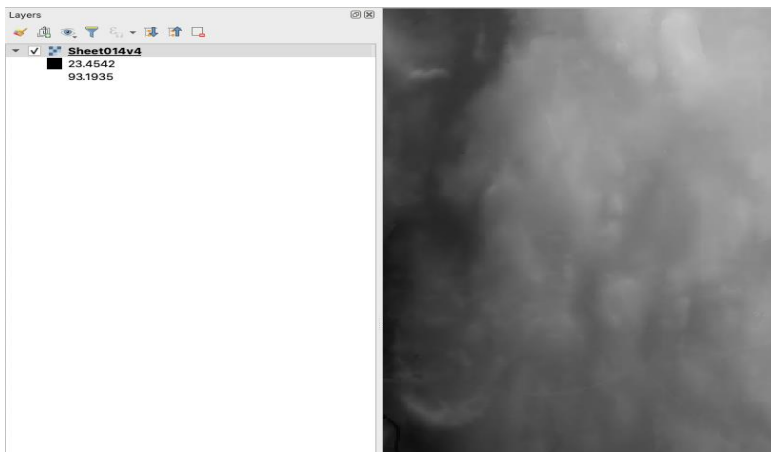
Loading Raster Data into QGIS

- Add raster layers using the Data Source Manager
- Point to the file on your system



Styling Raster Data (1/3)

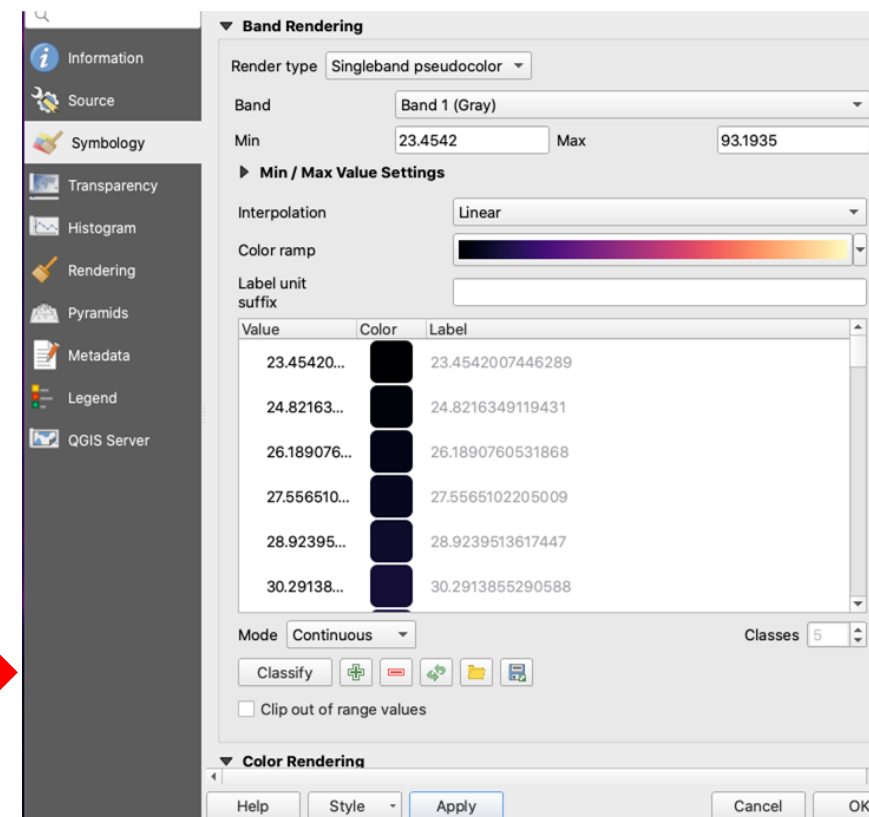
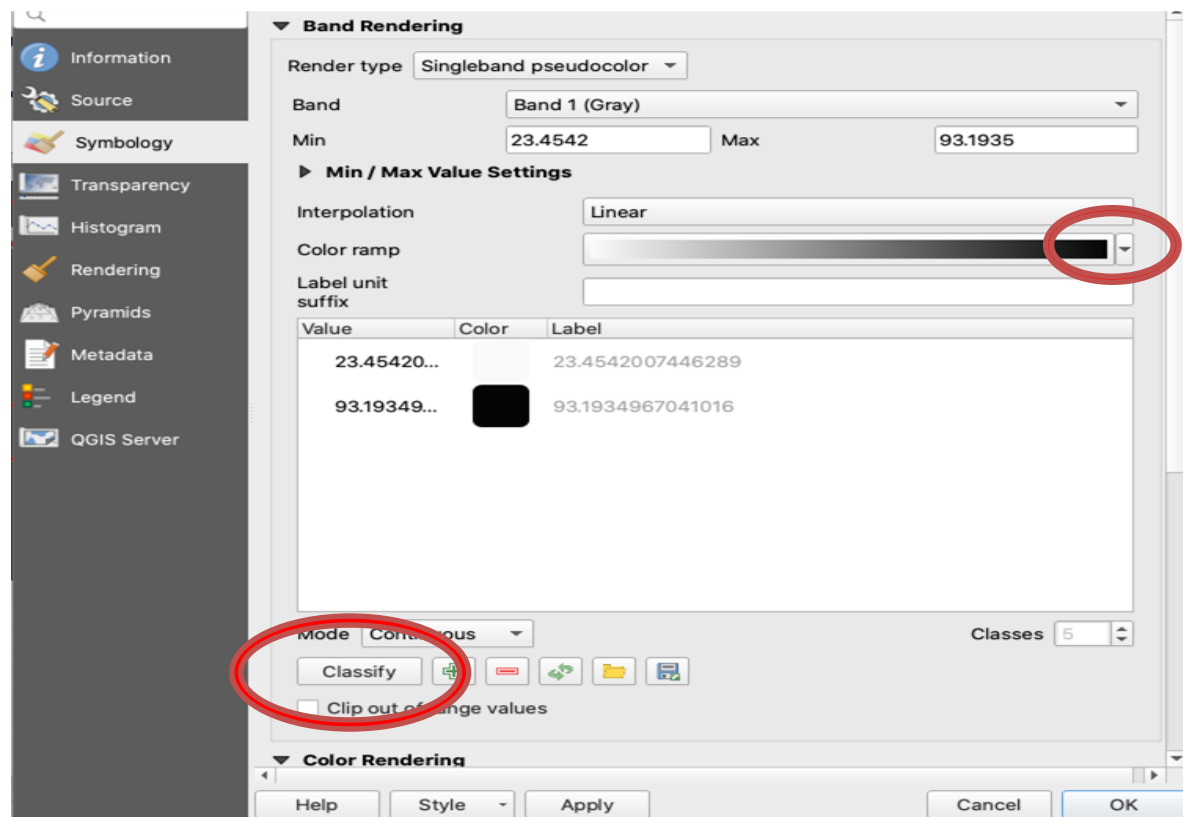
- Raster data can be coloured through Layer Properties



- Multiband color
- Paletted/Unique values
- Singleband gray
- Singleband pseudocolor
- Hillshade

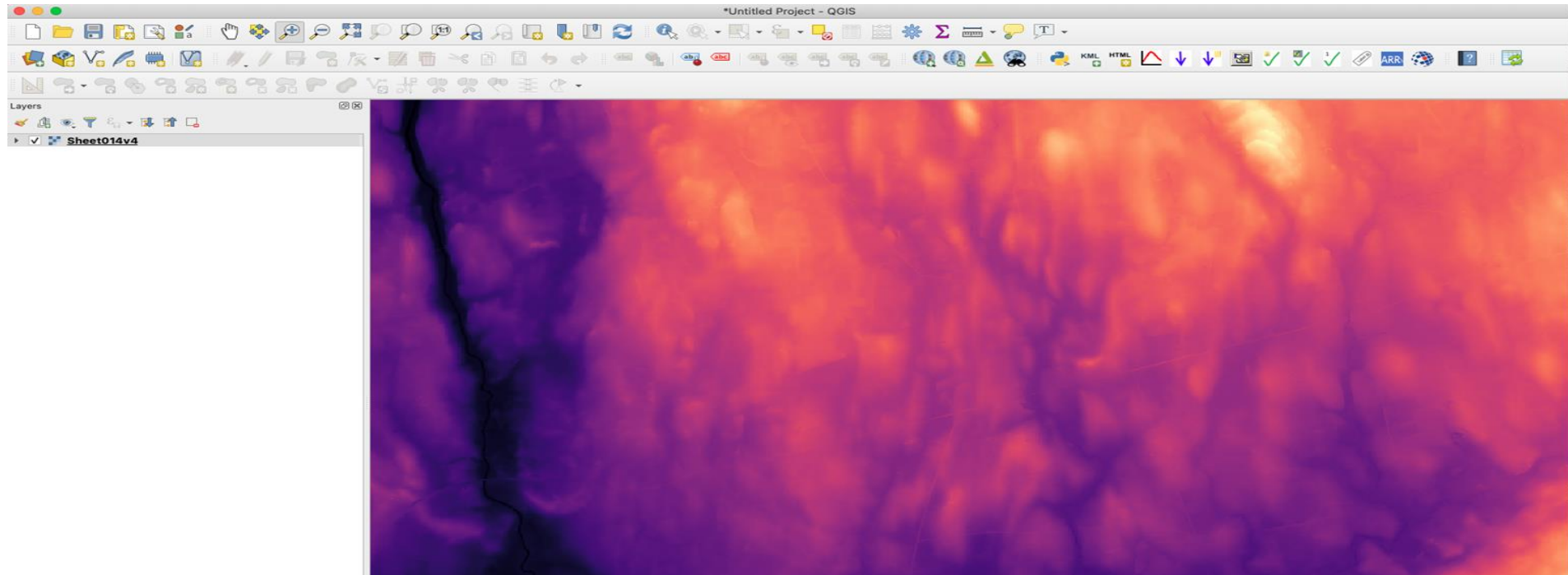
Styling Raster Data (2/3)

- Select Color ramp – select a colour range
- Select Classify to reload the data with new style



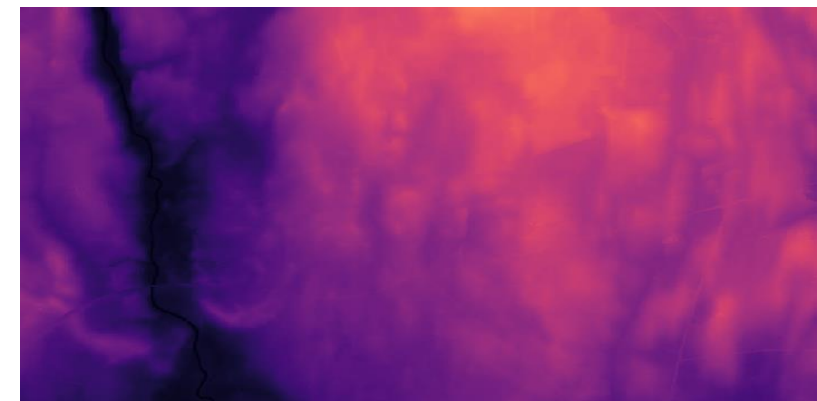
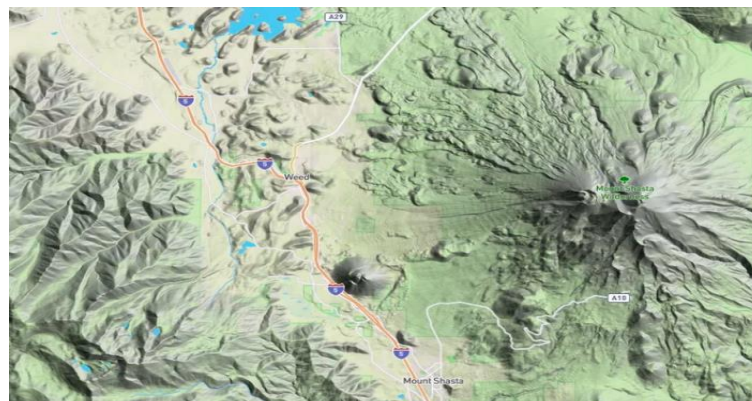
Styling Raster Data (3/3)

- A new colour ramp has been selected
- Low elevations are black and high elevations are orange



Conclusion

- Introduced to Raster Data
- How this can be viewed in QGIS
- How to customize raster styling



This programme is
gratefully supported
by



USAID
FROM THE AMERICAN PEOPLE



MAP ACTION

mapaction.org