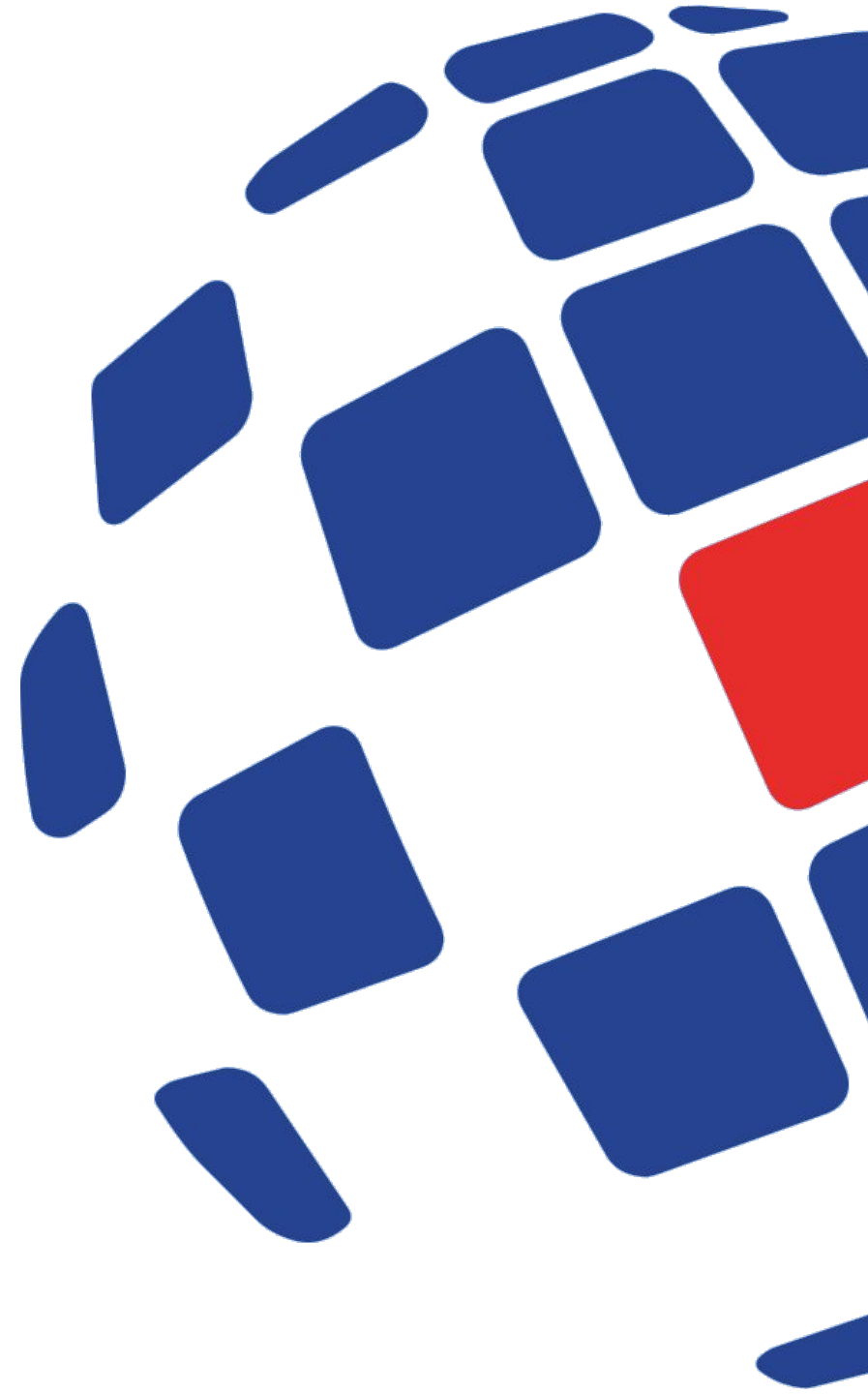




October 2023 - Grenada

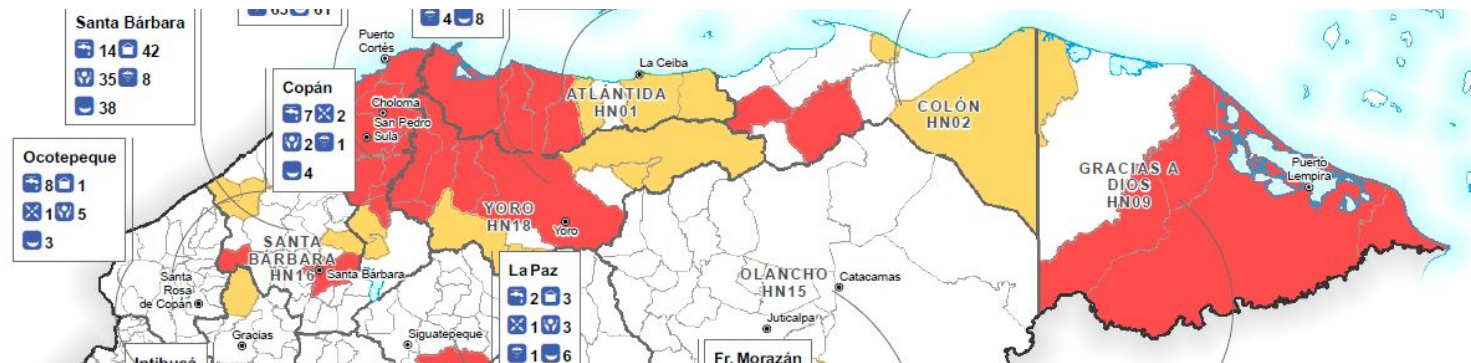
Making informed decisions in a humanitarian response

MapAction Example Product Catalogue and Product Planning Cycle



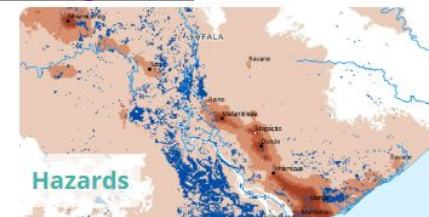
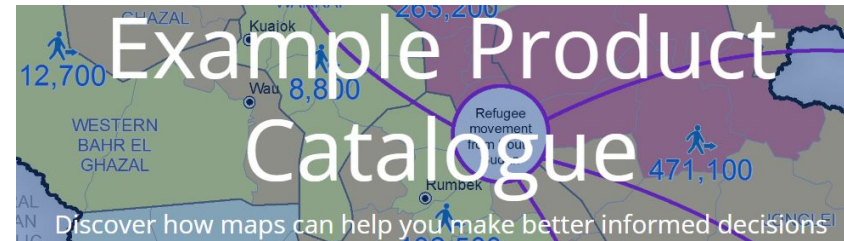
We will cover

- Introduction to MapAction Example Product Catalogue (EPC) and EPC Map Types
- Discussion - what types of products do you need?
- Exploring the catalogue - Core Examples and searching for others
- Product Cycle - identifying how to plan the products needed at the right time, and plan the design of individual products

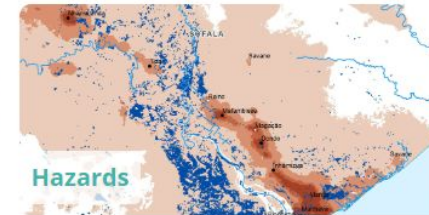


MapAction Example Product Catalogue

- MapAction developed an Example Product Catalogue (EPC)
- Over 80 different types of map from many responses
- Each example map describes its purpose
- Shows how maps can help inform decision making
- The guide explains tips on production and data sources
- EPC guide is available online - <https://guides.mapaction.org/>



EPC Map Types



- **CORE**

- Reference, Situational awareness, Population, Infrastructure

- **CLUSTERS**

- Education, Shelter, Food security, Health, Logistics, WASH

- **HAZARDS**

- Conflict, Environmental, Epidemics, Floods, Geological, Meteorological

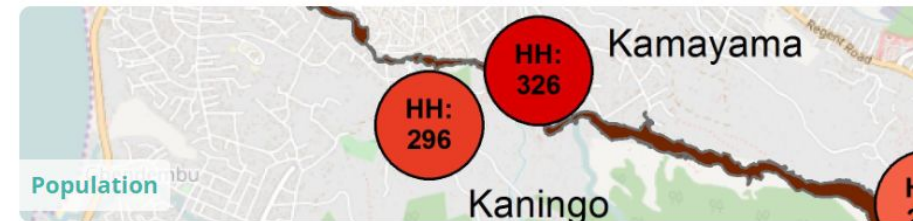
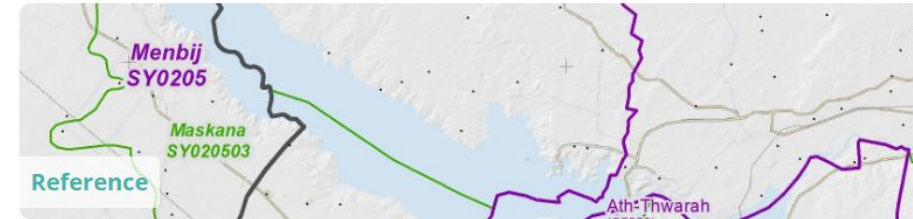
Discussion

Aim: Let's make a list of maps you think you might need and define them, then look at MapAction's EPC to look at solutions and options. Identify the data and processes we might need to make them.

1. Make a list of maps
 - a. Core - ones you would always use
 - b. Disaster specific (Hazard)
 - c. Cluster/Sector Specific (e.g. Logistics, health)
2. Look through EPC slides here or EPC online to look at solutions
3. Start identifying the data needs for this.

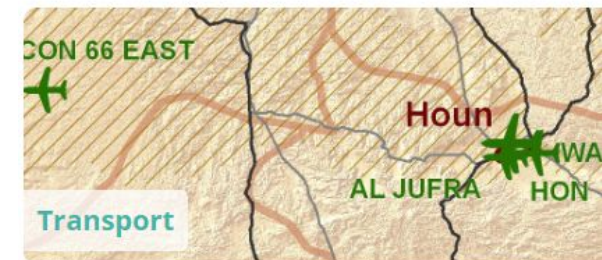
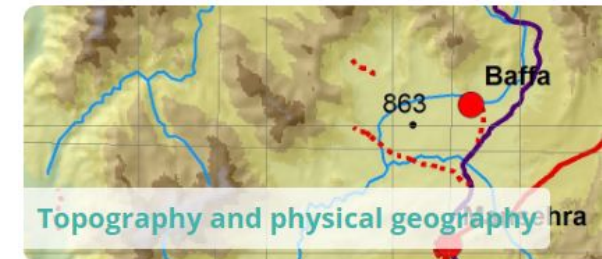
CORE MAPS

- Reference
 - Country, Administrative, Geographic, Transport
- Situational awareness
 - Situation overview, Who-what-where
- Population
 - Baseline, Affected, Languages, Displaced
- Infrastructure
 - Critical, Humanitarian



REFERENCE

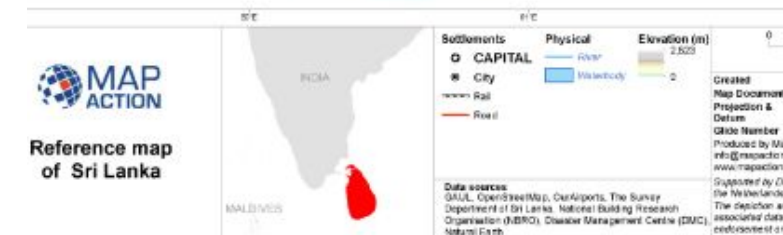
- Reference maps are fundamental products
- They can be useful in any response
- They provide context and orientation
- Simple country overview or street level maps
- There are different types:
 - Country overview
 - Administrative boundaries and p-codes
 - Topographic and physical geographic
 - Transport



Country Overview

- Simple overview and orientation of country or region
- Provides overview: capital, cities, roads, rivers, lakes

- **Strategic or operational?** Strategic + operational
- **Basemap, baseline or situational?** Basemap
- **When might it be produced?** Early as possible
- **Intended audience:** Everyone
- **Humanitarian decisions:** For responders arriving
- **Data:** Natural Earth Data, OpenStreetMap, HDX

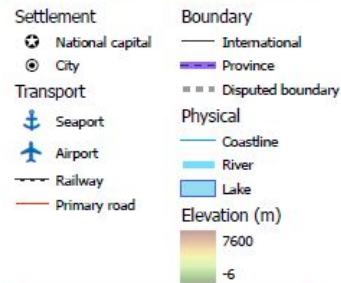


Country Overview - Method

- Key features:
 - National capital
 - Other major cities
 - Roads, airports, ports
 - Significant rivers, lakes



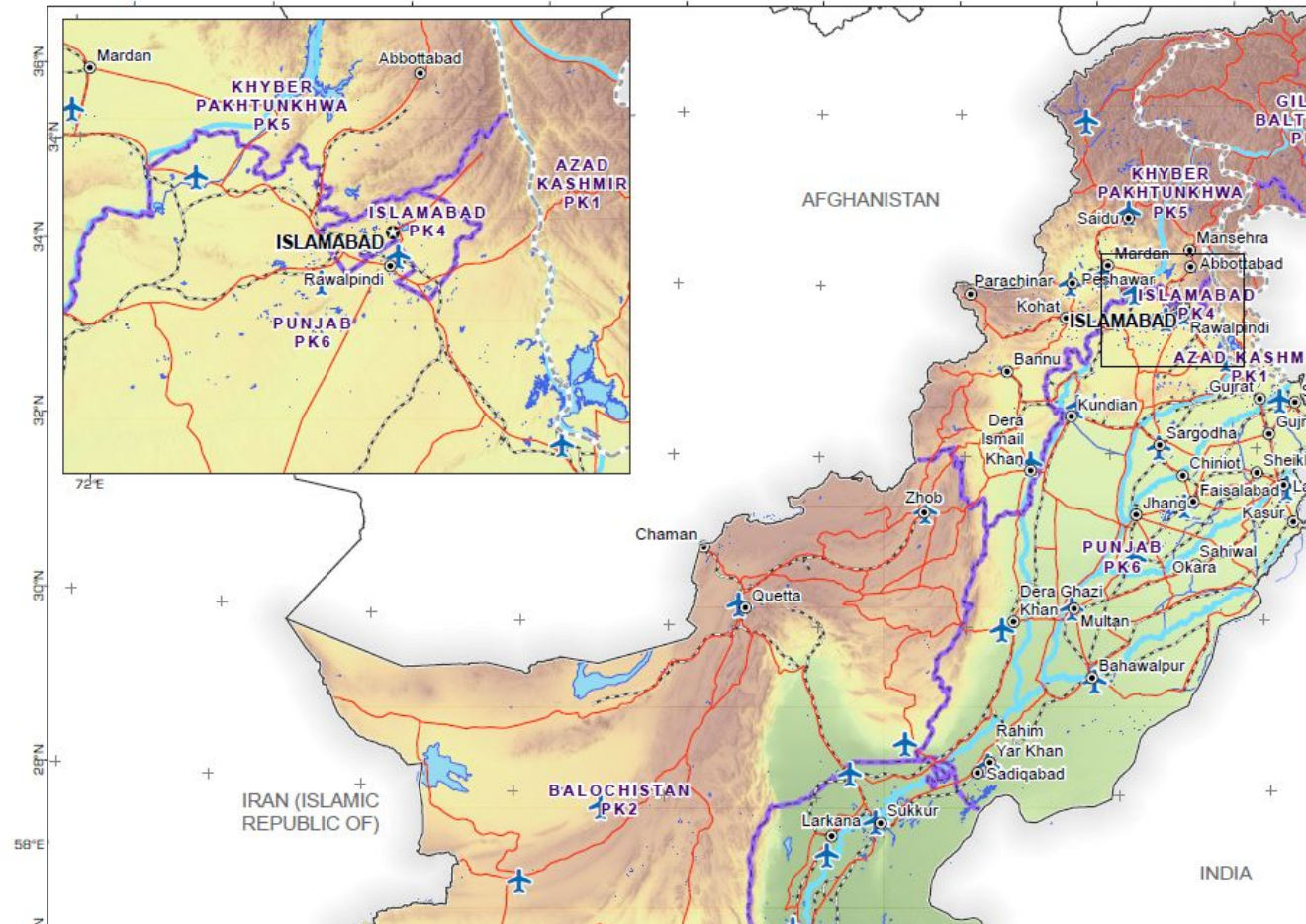
Country overview map showing main settlements, transport links, elevation, water features and administrative boundaries



Data Sources
OpenStreetMap, Our Airports, World Port Index, GMTED, WFP, UN, Natural Earth

Created 11 Apr 2023 / 12:00 UTC+05:00

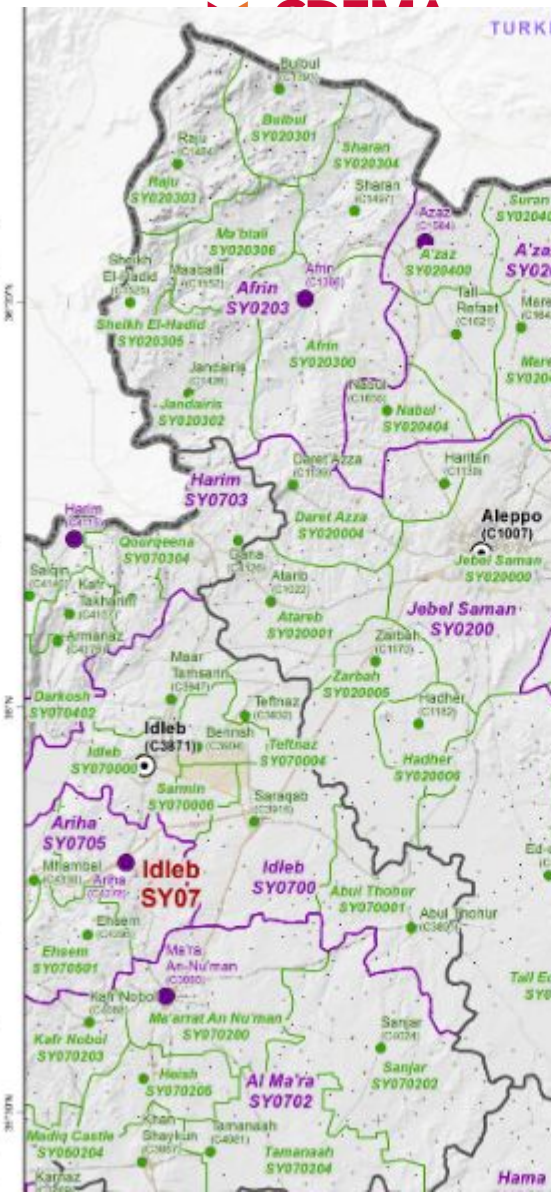
Pakistan
Country Overview



Administrative boundaries

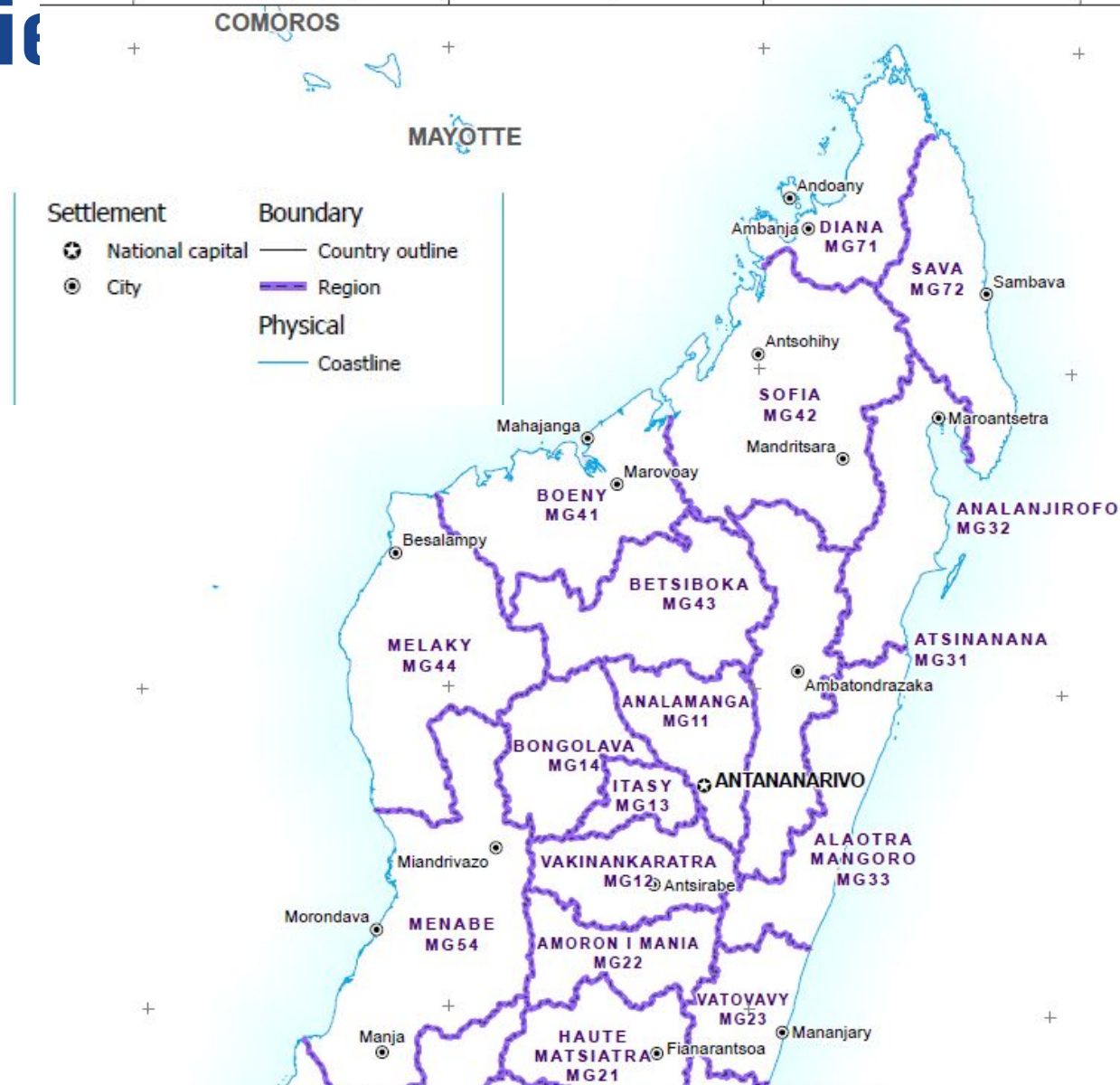
- Admin boundaries with p-codes (place code)
- Enables situational data to be aggregated
- Consistent framework to facilitates analysis
- Essential boundaries are standardised
- Different administration levels:
 - level 0 (country), level 1 (province, municipality)
 - level 2 (district), level 3 (city), level 4 (village)

- **Strategic or operational?** Strategic + operational
- **Basemap, baseline or situational?** Basemap
- **When might it be produced?** Early as possible
- **Intended audience:** Everyone
- **Humanitarian decisions:** For responders arriving
- **Data:** GADM, GAUL, LSIB, SALB, COD, HDX



Administrative boundaries

- Map styles:
 - Basic – black and white
 - Advanced – full colour
 - Gazetteer for settlements
- Map levels:
 - Country
 - Admin level 1
 - Admin level 2
- Use map series / atlas



SITUATIONAL AWARENESS

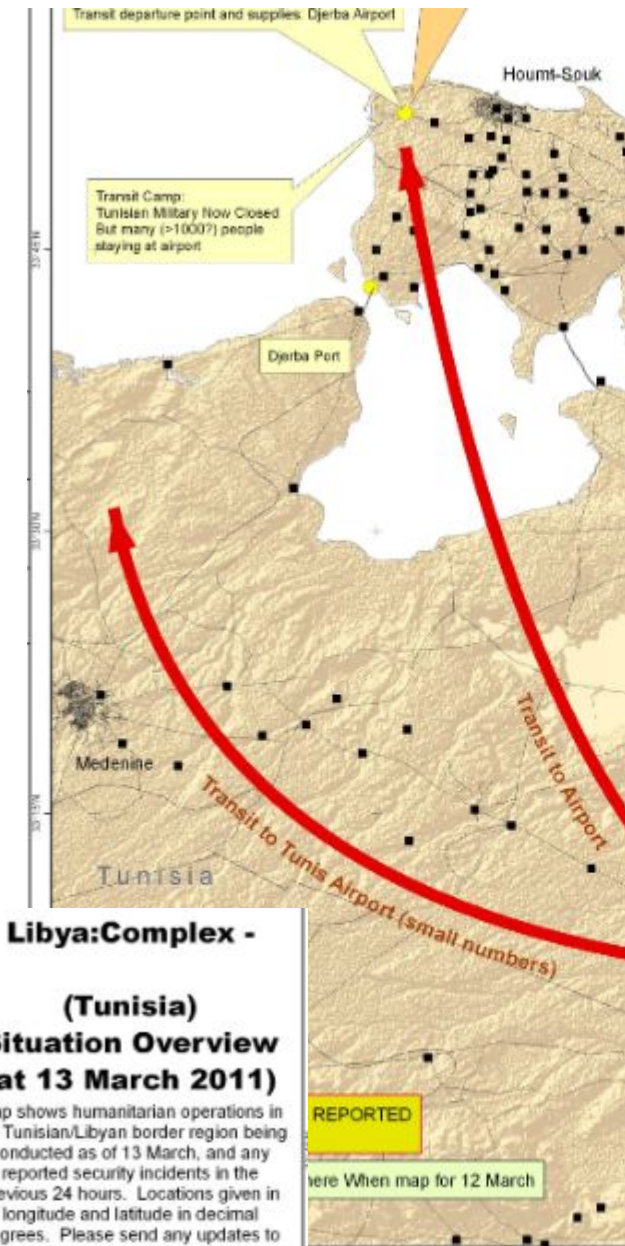
- Many types of specific situational maps
- These described in other sections
- Two types of overall situational mapping:
 - Situational Overview
 - Who-What-Where (3W)



Situational Overview

- Common operational picture - snapshot or overview
- Situation - impacts, hazards, affected people, response
- Visualisation of disaster zone for responders
- Understanding of operating environment

- **Strategic or operational?** Operational
- **Basemap, baseline or situational?** Situational
- **When might it be produced?** Start of emergency
- **Intended audience:** Everyone
- **Humanitarian decisions:**
 - Orgs - Gov (National or Local), UN, Clusters, NGOs
 - Roles - Rescuers, Programme Managers, funders
- **Data:** Reports (government, OCHA), assessments



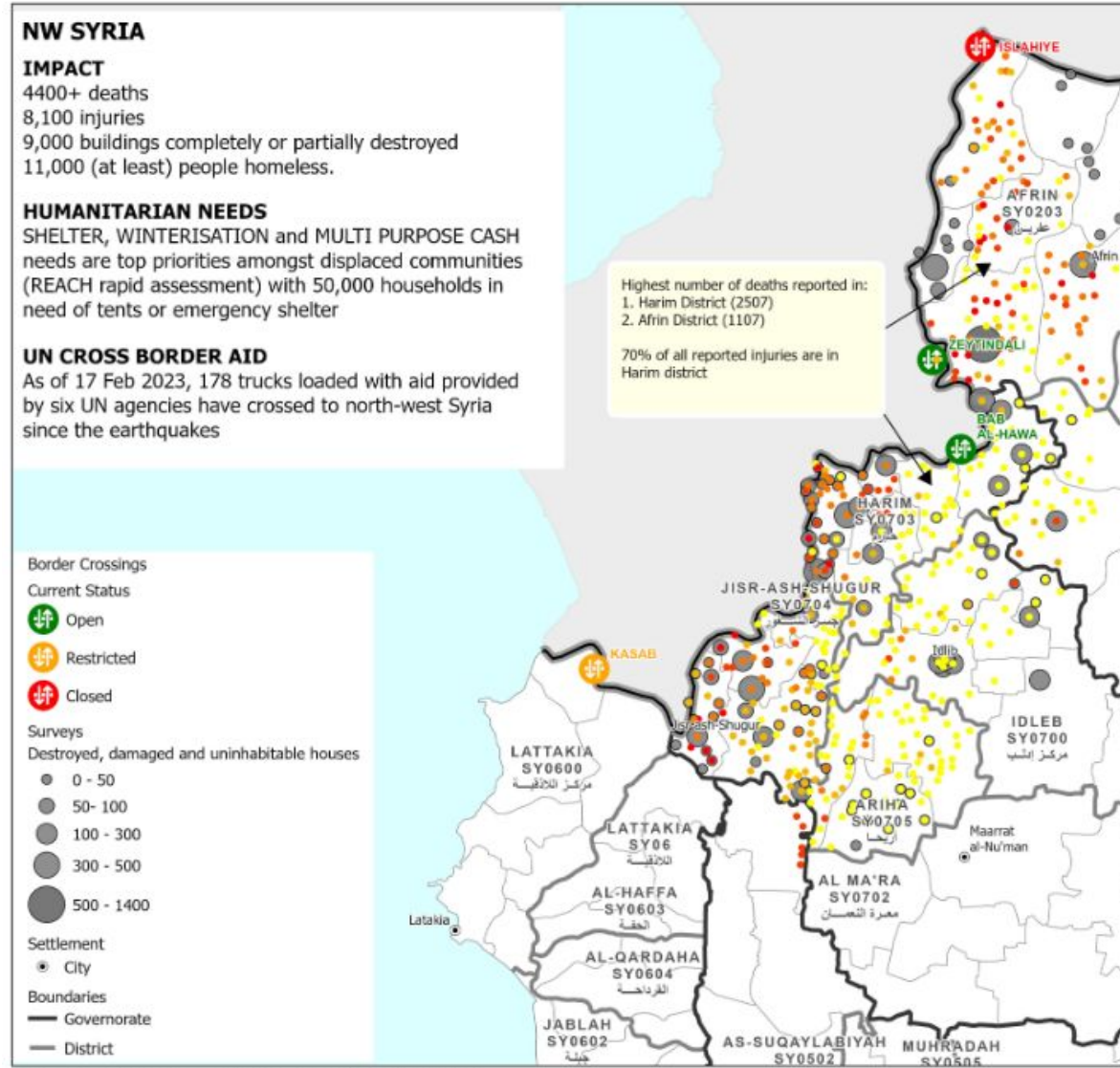
Libya:Complex - (Tunisia) Situation Overview (at 13 March 2011)

Map shows humanitarian operations in the Tunisian/Libyan border region being conducted as of 13 March, and any reported security incidents in the previous 24 hours. Locations given in longitude and latitude in decimal degrees. Please send any updates to the OSOCC or to libya@mapaction.org.

Situational Overview - Method

- Clear, simple maps about emergency
- Priority in earliest stages of disaster
- Base maps –
 - admin boundaries at appropriate level
 - relevant topographic data layers.
- Situational data –
 - Fragmentary and anecdotal
 - Use textual annotations
- ‘No data’ is not ‘no impact’
- Manage map updates

MAP ACTION Syrian Arab Republic: Earthquake
Situation overview as of 17th Feb 2023

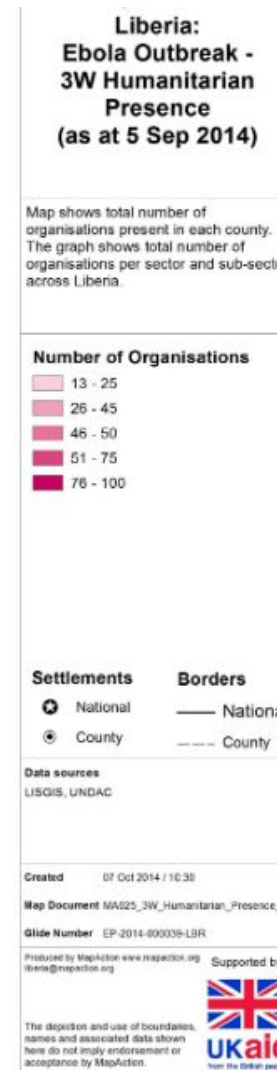


Data Sources: OSM, NaturalEarth, UNOCHA, Esri, USGS, REACH, ACU

Who-What-Where

- Showing who (which agencies)
- Are doing what (relief operations)
- And where they are operating,
- Also known as 3W or 4W:
 - who, what, where and when (time)

- **Strategic or operational?** Strategic (operational)
- **Basemap, baseline or situational?** Situational
- **When might it be produced?** Coordination phase
- **Intended audience:**
 - Governments (National/Local), UN, Clusters, NGOs, Donors
- **Influence on humanitarian decisions:**
 - identify gaps and overlaps in the relief effort
 - provoke the reallocation of aid as appropriate
- **Data:** 3W matrix

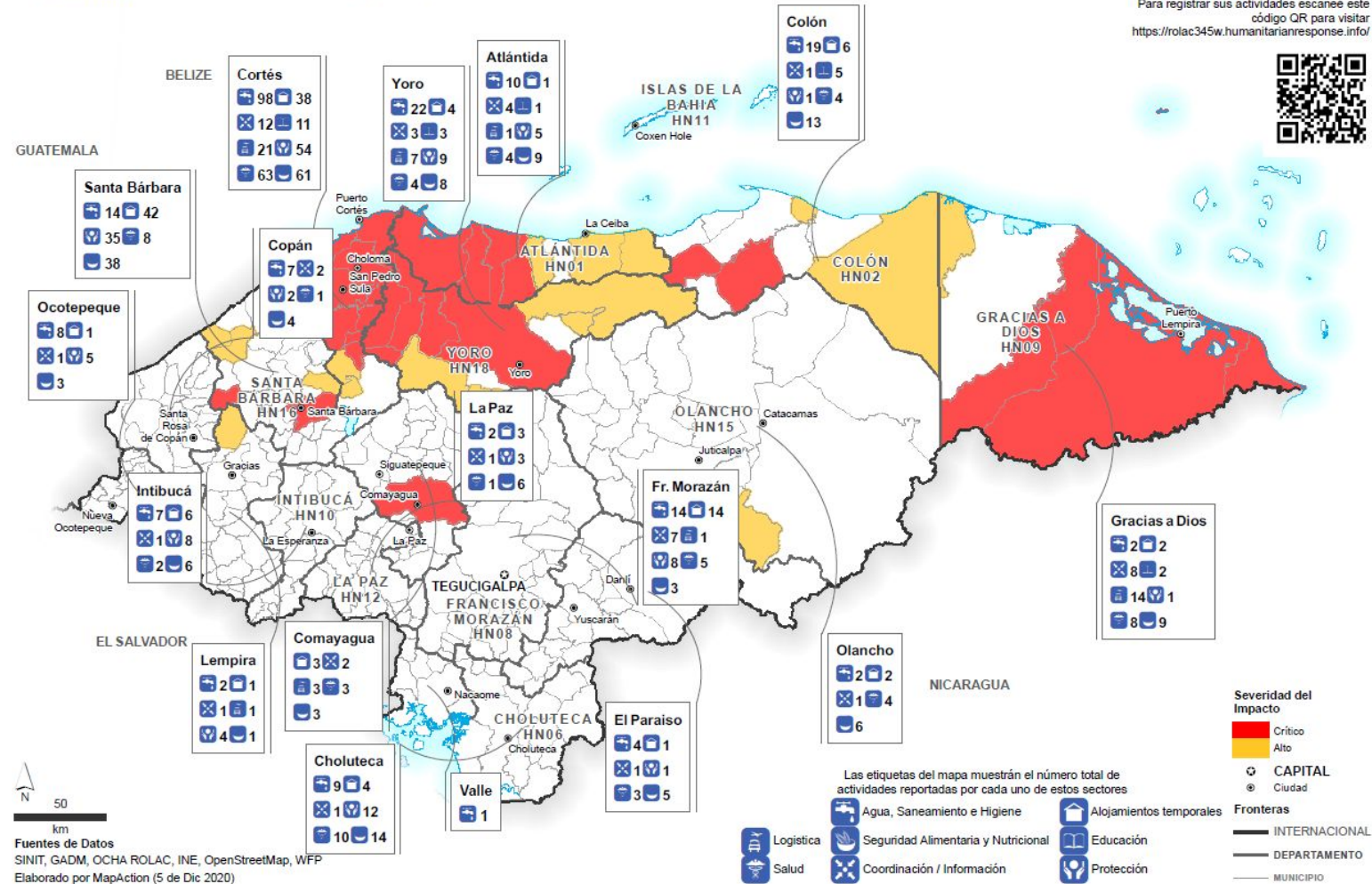


Who-What-When - Method

- Humanitarian presence:
 - Overview map
 - Count of organisations or
 - Activities per admin unit
- Cluster specific:
 - activities per admin unit

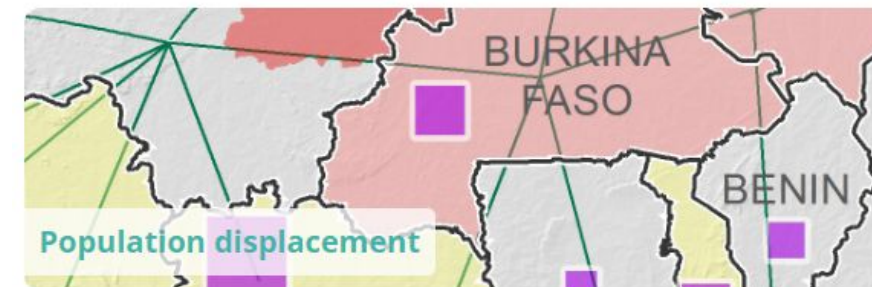
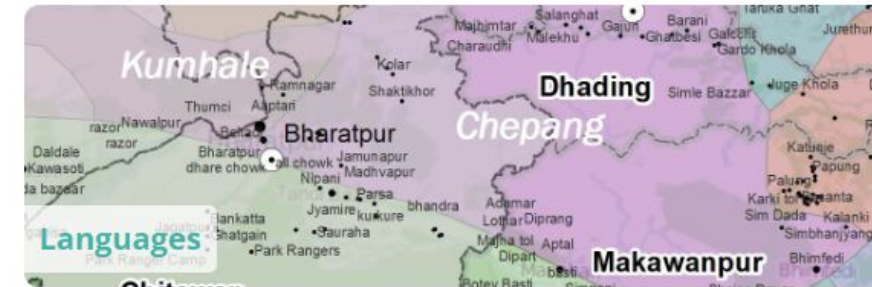
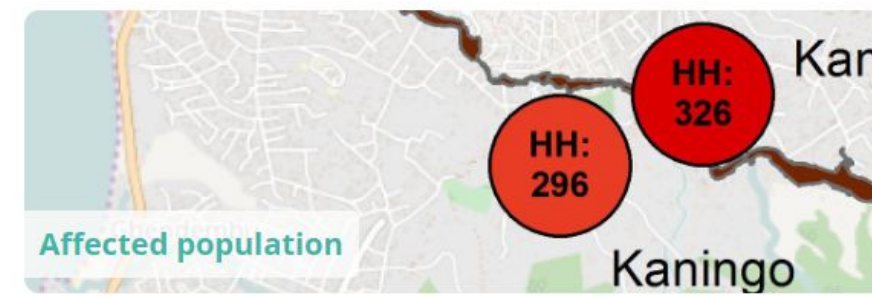


Honduras: Huracán Eta / Iota
Presencia Humanitaria por Departamento (a las 2300 el 4 de Dic 2020)



POPULATION

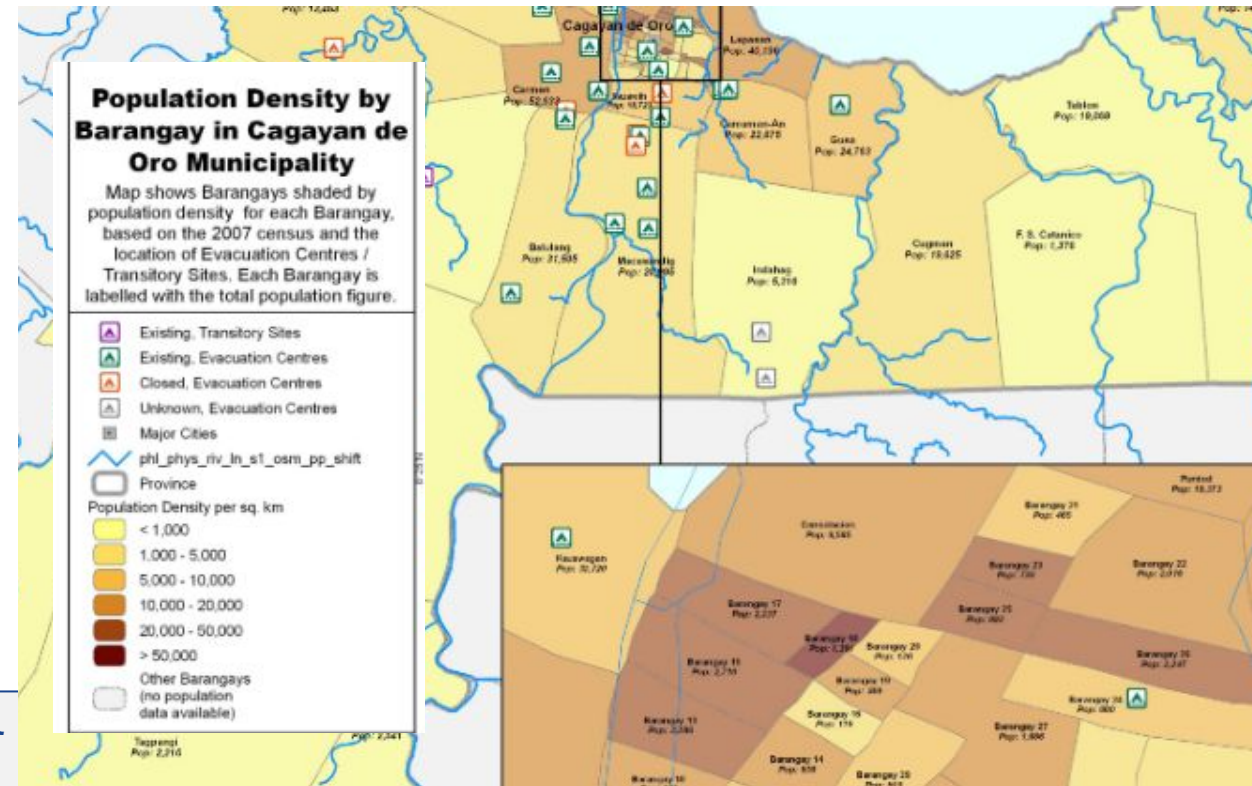
- Population maps can be categorised:
 - Baseline population
 - Affected population
- Baseline - population before the response
- Affected - population impacted by the event
- Language – understanding situation and needs
- Displacement – IDP or refugees



Baseline Population

- Population before emergency.
- Absolute population no. per district
- Population densities

- **Strategic or operational?** Strategic + operational
- **Basemap, baseline or situational?** Baseline
- **When might it be produced?** Pre-deployment
- **Intended audience:**
 - Everyone
- **Influence on humanitarian decisions:**
 - Understanding potential impact of disaster
 - Attempt humanitarian profile for the emergency
- **Data:** Census, COD, HDX, GRUMP, WorldPop

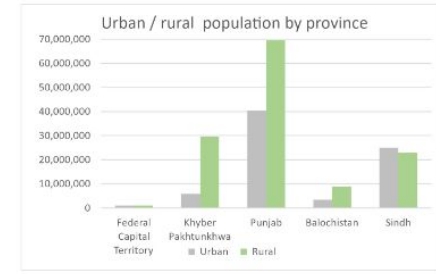
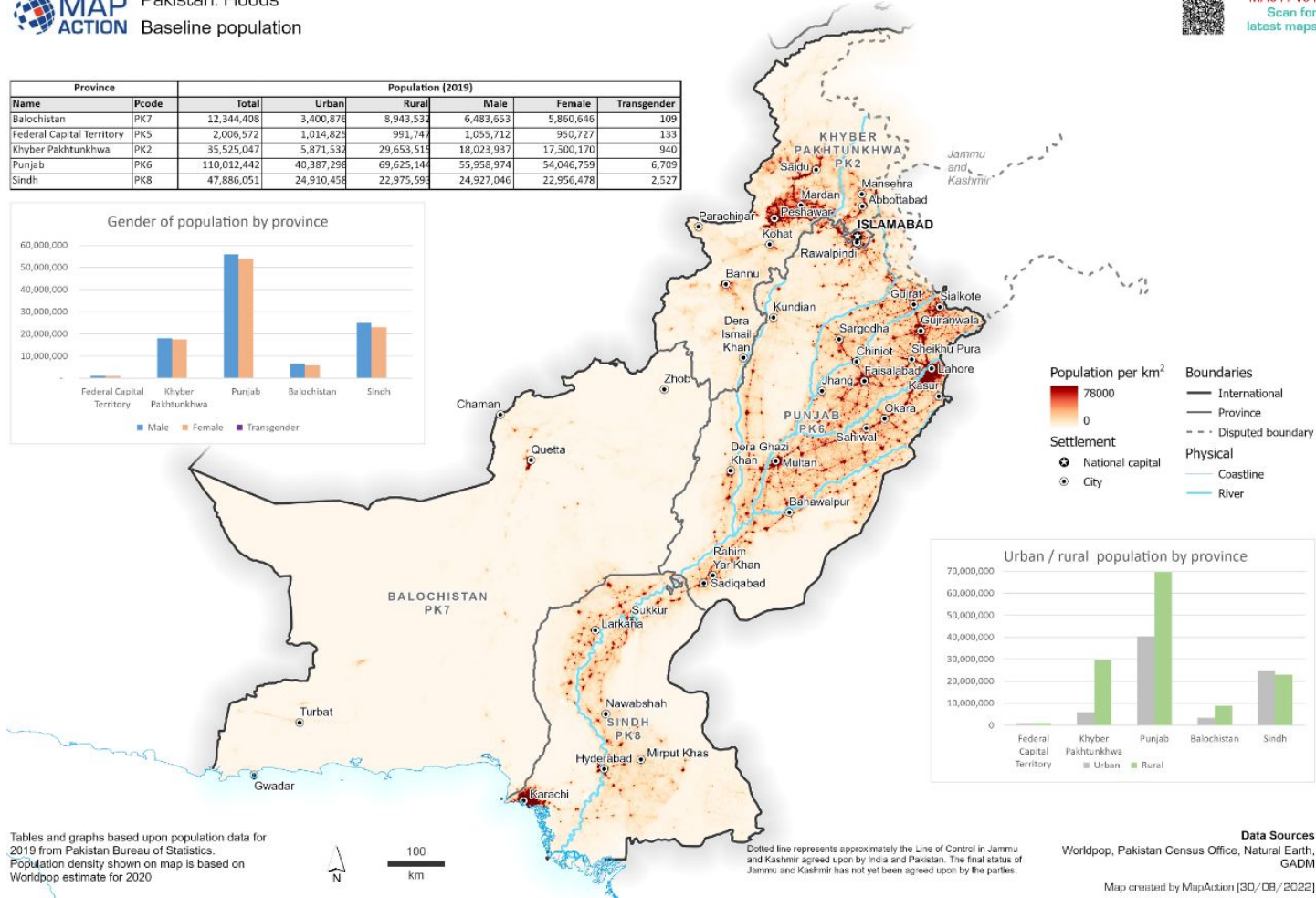
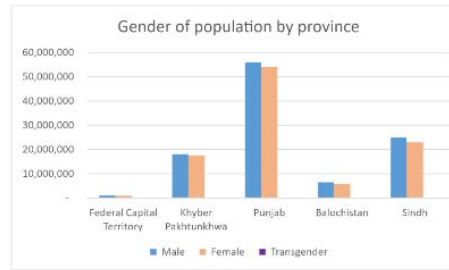


Baseline Population - Method

- Population density
- Source needed
- Symbolisation:
 - Show pop density visually
 - Label by absolute numbers
- Population figures:
 - Total population by area
 - Pyramid chart showing -
 - Age, gender, urban/rural

MAP ACTION Pakistan: Floods
Baseline population

Province	Pcode	Population (2019)					
		Total	Urban	Rural	Male	Female	Transgender
Balochistan	PK7	12,344,408	3,400,878	8,943,530	6,483,653	5,860,646	109
Federal Capital Territory	PK5	2,006,572	1,014,823	991,749	1,055,712	950,727	133
Khyber Pakhtunkhwa	PK2	35,525,047	5,871,532	29,653,515	18,023,987	17,500,170	940
Punjab	PK6	110,012,442	40,387,298	69,625,144	55,958,974	54,046,759	6,709
Sindh	PK8	47,886,051	24,910,458	22,975,593	24,927,046	22,956,478	2,527



Tables and graphs based upon population data for 2019 from Pakistan Bureau of Statistics. Population density shown on map is based on Worldpop estimate for 2020

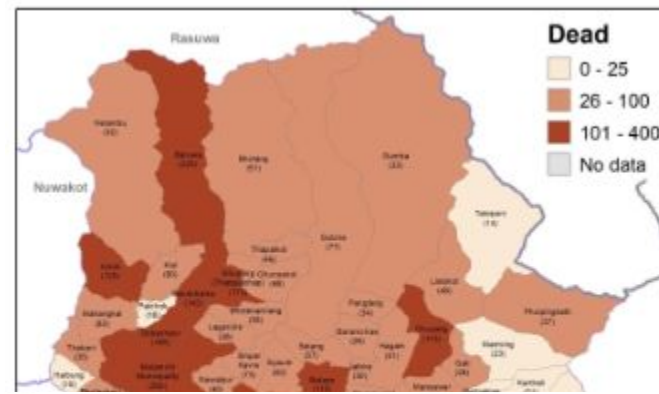
Dotted line represents approximately the Line of Control in Jammu and Kashmir agreed upon by India and Pakistan. The final status of Jammu and Kashmir has not yet been agreed upon by the parties.

Data Sources
Worldpop, Pakistan Census Office, Natural Earth, GADM
Map created by MapAction (30/08/2022)

Affected Population

- Population before emergency
- Absolute pop no. per district
- Population densities

- **Strategic or operational?** Strategic + operational
- **Basemap, baseline or situational?** Baseline
- **When might it be produced?** Pre-deployment
- **Intended audience:**
 - Everyone
- **Influence on humanitarian decisions:**
 - Understanding potential impact of disaster
 - Attempt humanitarian profile for the emergency
- **Data:** Census, COD, HDX, GRUMP, WorldPop



Nepal: Earthquake Emergency - Details of the affect on the population in Sindhupalchok (as at 7 May 2015)

Four maps showing the numbers of dead, missing, injured, and rescued per Village Development Committee (VDC) or Municipality as reported by the District Disaster Rescue Committee (DDRC).



Affected Population - Method

- Unit of measurement:
- Use individual people
- Not household/families
- Otherwise uncertainty
- Use round figures



This map shows the number of deceased and injured people in Districts of Madagascar as of 14th Feb 2022.

Cette carte montre le nombre de personnes décédées et sinistres dans les districts de Madagascar au 14 février 2022

Settlements		Borders	
	CAPITAL		REGIONAL
	1		6 - 3,268
	2 - 3		3,269 - 7,892
	4 - 9		7,893 - 20,873
	10 - 87		20,874 - 30,121

Data Sources:
Madagascar National Disaster Management Office, GADM, OpenStreetMap

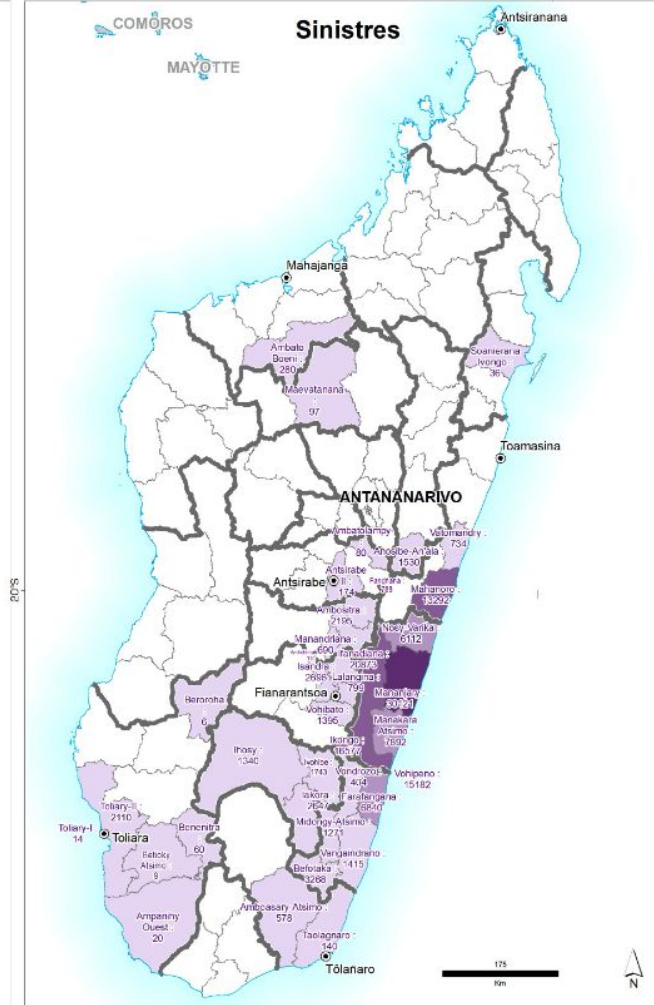
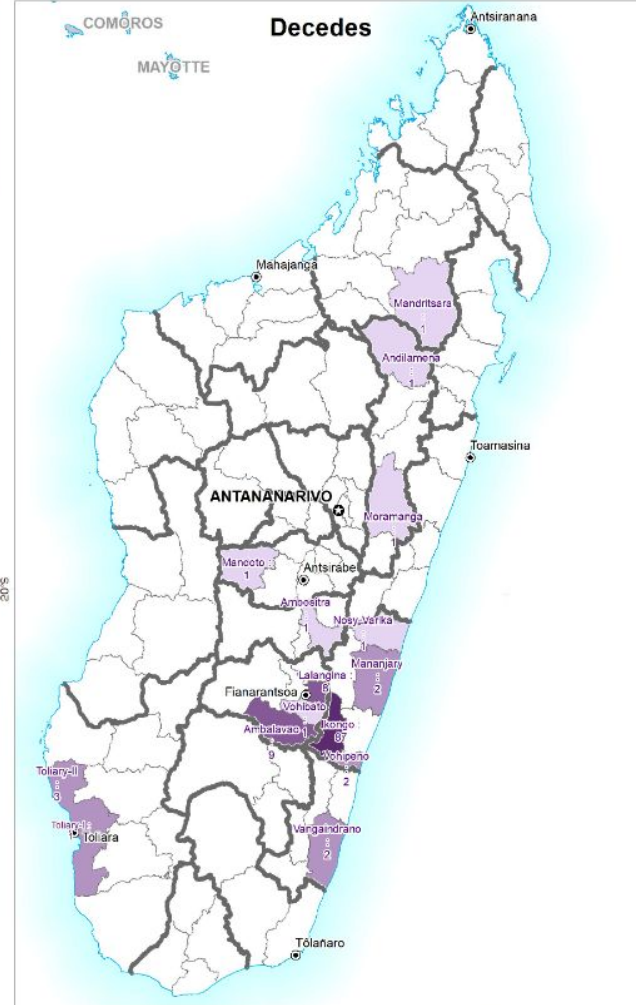
Created 15 Feb 2022 / 10:00 UTC+03:00

Projection & Datum WGS 1984 UTM Zone 38S / WGS

GLIDE Number EC:2022-000156-MDG

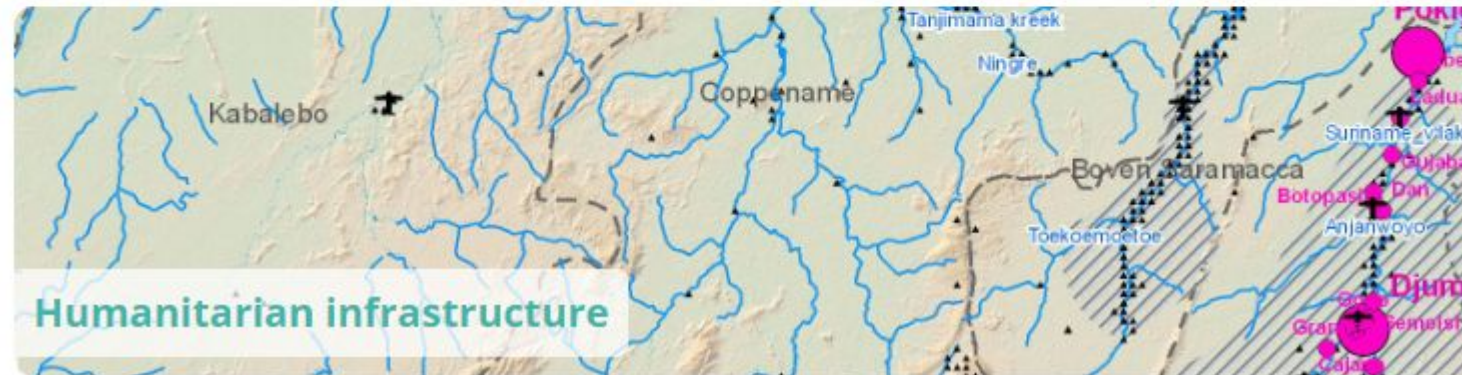
Produced by MapAction
<https://mapaction.org/madagascar@mapaction.org>

Supported by German Federal Foreign Office
The depiction and use of boundaries, names and associated data shown here do not imply endorsement or acceptance by MapAction.



INFRASTRUCTURE

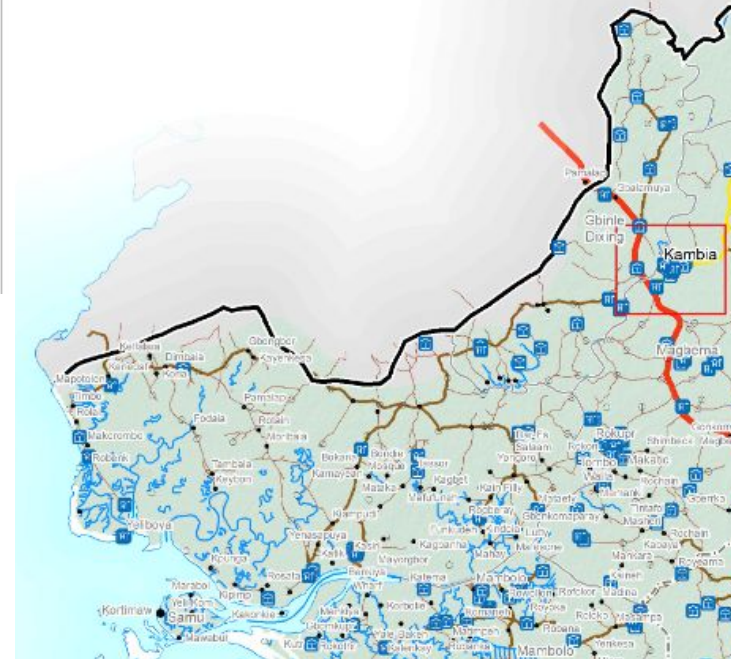
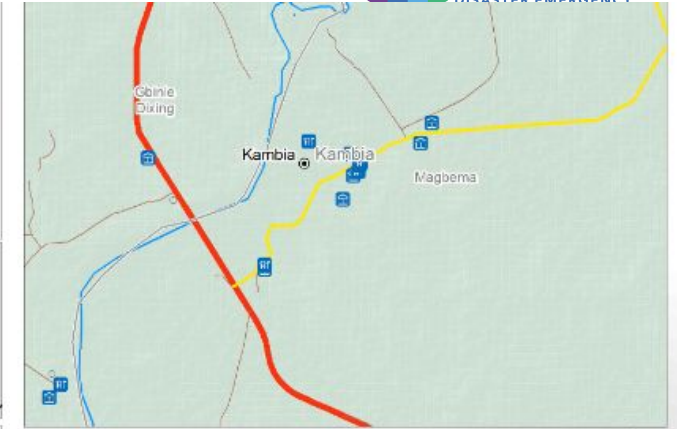
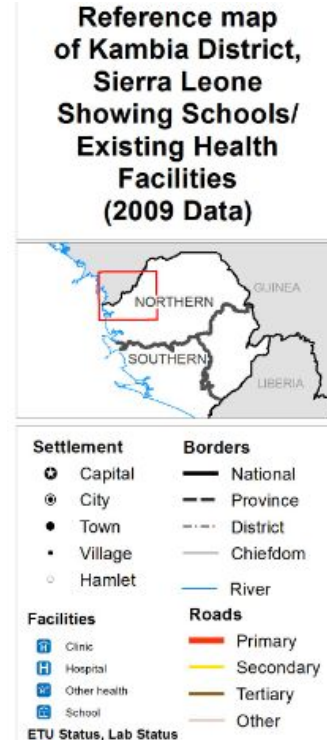
- Critical infrastructure
- Humanitarian infrastructure
- Damage to infrastructure
- Need support for recovery



Critical Infrastructure

- Show basic structures and facilities
- Transport networks are key
- POI: education, hospitals, fire stations, hurricane shelters etc
- Infrastructure products as basemaps
- For assessments overlay situational data

- **Strategic or operational? Operational**
- **Basemap, baseline or situational? All three**
- **When might it be produced? Early stages**
- **Intended audience:**
 - Rescue workers, EMT, logisticians, specialists
- **Influence on humanitarian decisions:**
 - Damaged infrastructure will inhibit responders
 - Undamaged roads, schools, hospitals is key
- **Data: hospitals, schools, roads, rail, airports, seaports**

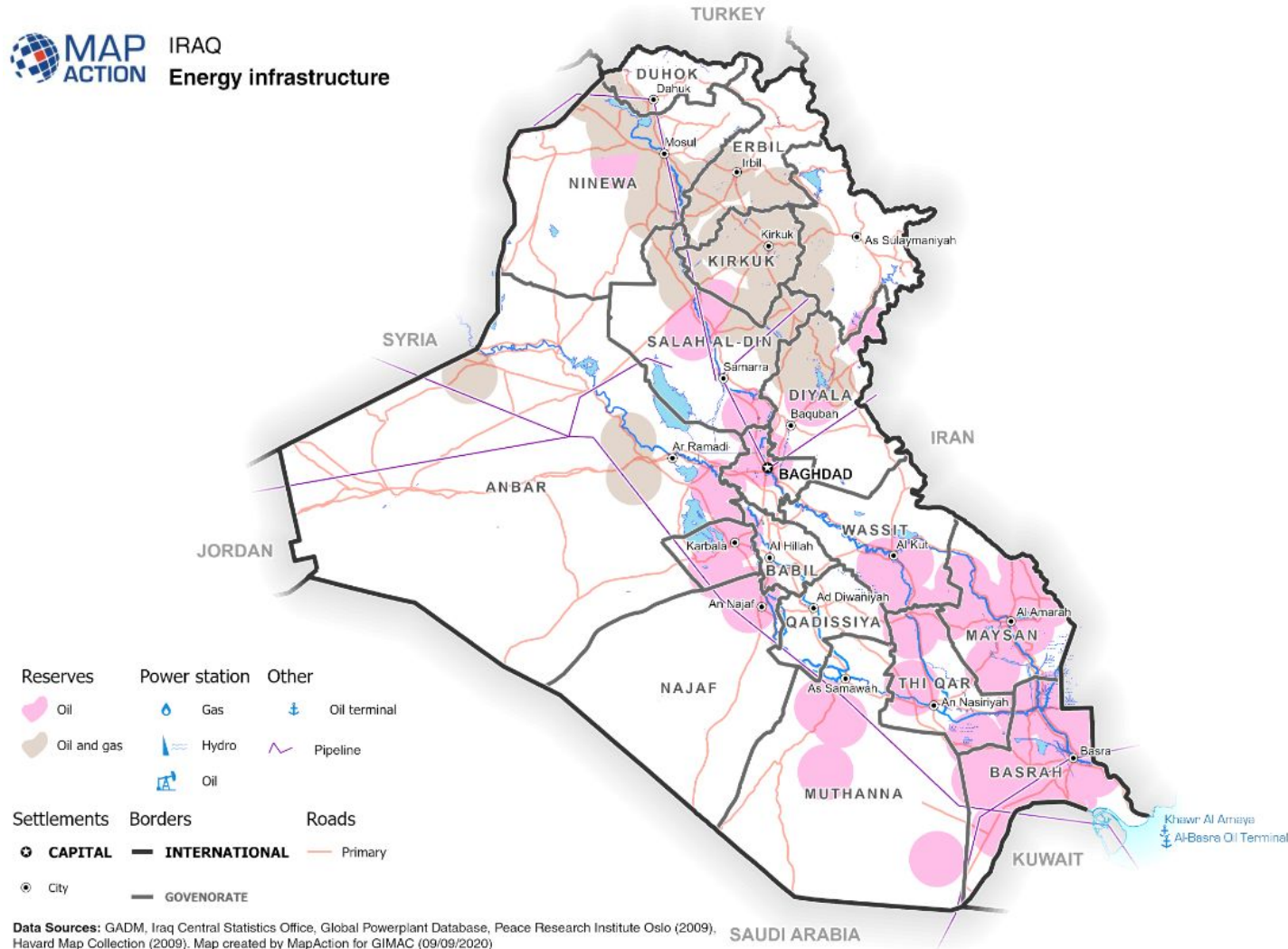


Critical Infrastructure - Method

- Individual map products:
 - Specific infrastructure themes
 - Looking at specific vulnerabilities
- Generalised products:
 - showing key infrastructure
 - hospitals, gov buildings, schools



IRAQ
Energy infrastructure



Humanitarian Infrastructure

- Show established and planned:
 - Humanitarian coordination sites
 - Humanitarian logistics locations
 - Designated areas of responsibility
- Coord centres/hubs established by:
 - national authorities, UN, clusters, NGOs

- **Strategic or operational?** Operational
- **Basemap, baseline or situational?** Situational
- **When might it be produced?** Early stages
- **Intended audience:**
 - Everyone at operational level
- **Influence on humanitarian decisions:**
 - Evolution of coherent coord architecture for emergency
 - Communicating locations of coordination centres
- **Data:** hospitals, schools, roads, rail, airports, seaports

Nepal Earthquake Humanitarian Infrastructure (as of 11 May 2015)

Map shows established and planned humanitarian coordination and logistics locations, and their designated areas of responsibility, as at the map date (check with OSOCC for any updates). Principal logistics hubs are also shown.

Data sources
 Situational data: Ministry of Home Affairs, UNDAC, Logistics Cluster
 Boundaries: UN OCHA
 Settlements: OSM
 Physical features: Geonode

Settlements
 • Town
 • City

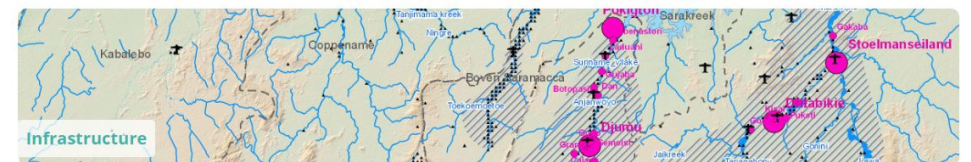
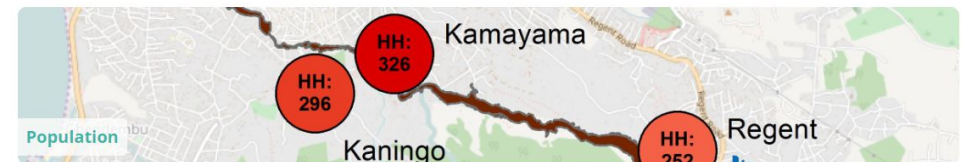
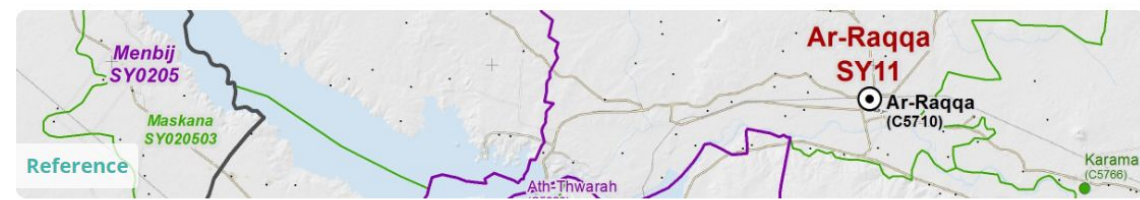
Roads
 — Primary
 — Secondary

■ Less affected districts
 □ Priority affected districts



Conclusion

- Looked at EPC Core map theme
- **Core:** Reference, Situational, Population, Infrastructure
- **Reference:** Country, Administrative, Geographic, Transport
- **Situational:** Situation overview, Who-what-where
- **Population:** Baseline, Affected, Languages, Displaced
- **Infrastructure:** Critical, Humanitarian

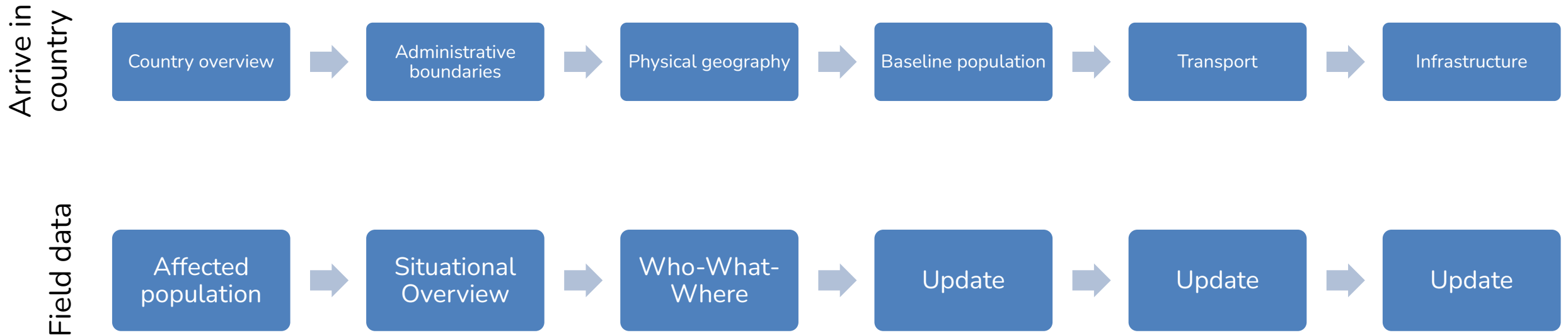


EMERGENCY RESPONSE PRODUCT PLANNING

A 'typical' response

- What information products would you produce and in what order?
- Use the post it notes and in pairs agree what the first 5 products would be and why.

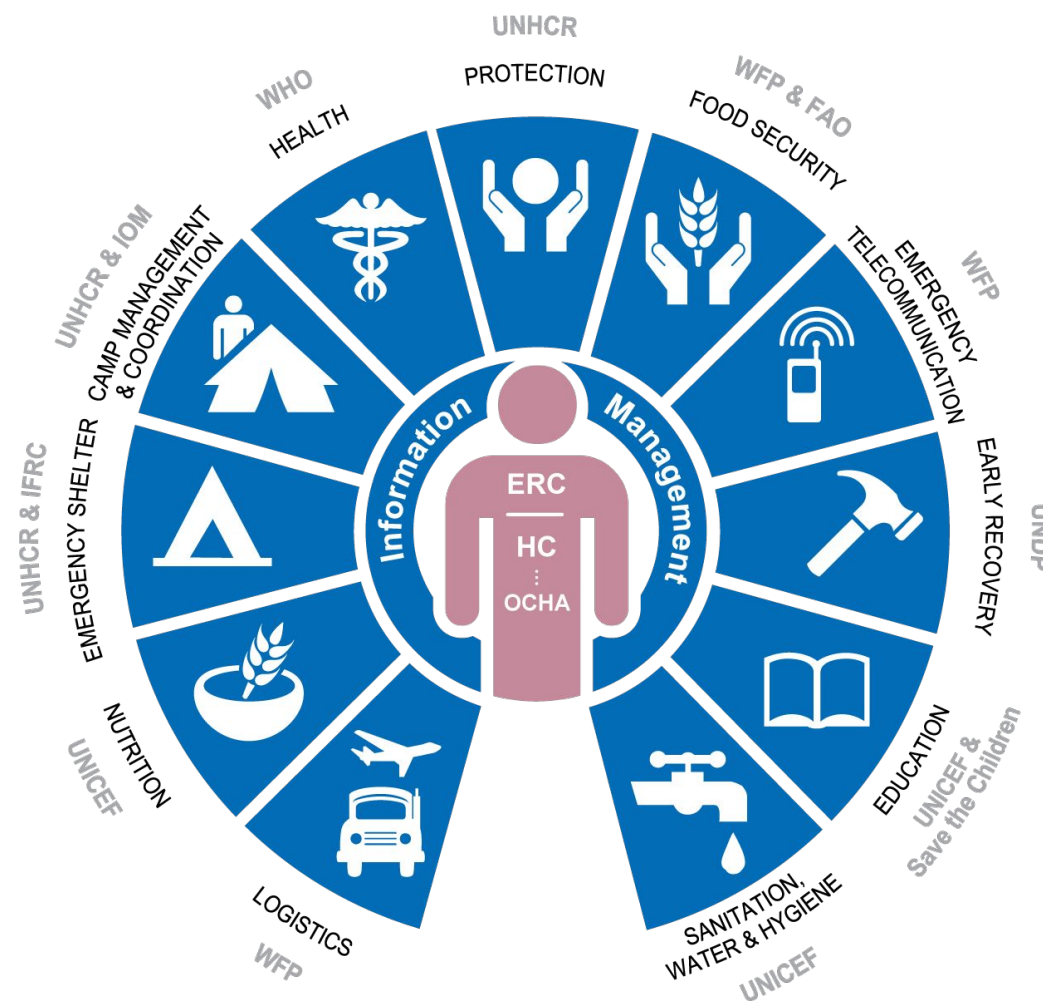
A 'typical' MapAction response



THERE IS NO 'TYPICAL' MAPACTION RESPONSE. IT DEPENDS ON THE STAGE OF THE RESPONSE CYCLE AND THE COMPLEXITY OF THE EMERGENCY

Cluster specific product cycles

- Some products may only be suitable to a specific type of response
- These will require their own product cycles
- Often they will want to know
 - Pre-existing conditions
 - What was affected
 - What impacts
 - What the response is



INDIVIDUAL PRODUCT PLANNING

PLANNING INDIVIDUAL PRODUCTS REQUIRES A STRONG UNDERSTANDING OF USER REQUIREMENTS

ENGAGEMENT WITH RESPONSE ORGANISATIONS (GOVERNMENT, NGOS ETC) IS CRITICAL TO THE RESPONSE



Map requirements

CONTACT DETAILS – name, organisation, email, phone number

DESCRIPTION – what map is being requested?

PURPOSE – what will the map be used for?

AUDIENCE – who is the map for? Overview vs technical

FORMAT – what type of map is needed? Paper vs digital stand alone vs report

SIZE – how big does the map need to be?

NUMBER – how many copies of the map are needed?

DATA - does your end user have any of the data you require to make the map - check it is useful before letting them go?

Data

Two approaches to data:

- Knowing what map you want to produce and deciding what data you need to produce it
- Knowing what data you have available and working out what maps you can produce with it.

A response will usually include both approaches to map production

Need to consider whether data is appropriate – quality, timeliness, coverage

Analysis and visualisation

- Do you need to work on the data before creating the product?
 - Only show a subset of the selected data
 - Join non spatial data to spatial data
 - Do some more sophisticated analysis (buffer, overlay)
- How can you show the data on the map?
 - Symbology, colour coding/ labelling / categories
 - Single Map, Atlas, Online Solution
 - Area of interest

Product Planning Conclusion

- **Purpose** – who has requested the map and why?
- **Narrative** – what is the data telling you? What map type best suits?
- **Visualisation**– the way you set up the map will influence how people will interpret it

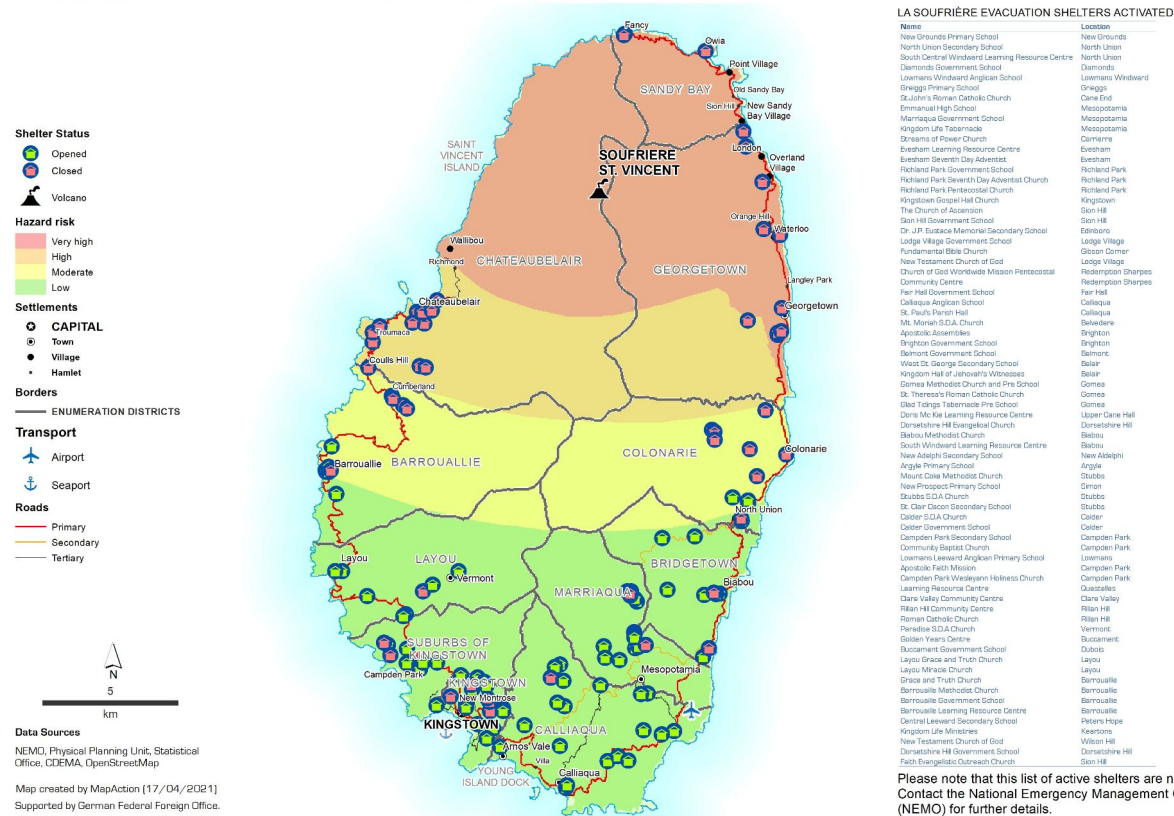


Concluding exercise

Take one of your identified products and work out:

- Who needs it?
- When in the response it is needed?
- How will it be used?
- What data you need?
- Is that data available?

MAP ACTION St Vincent and the Grenadines: La Soufrière volcano
Location and status of shelters (as of 17 Apr 2021)



Please note that this list of active shelters are not exhausted. Contact the National Emergency Management Organization (NEMO) for further details.

MA007 v1

This programme is gratefully supported by



USAID
FROM THE AMERICAN PEOPLE





MAP ACTION

mapaction.org