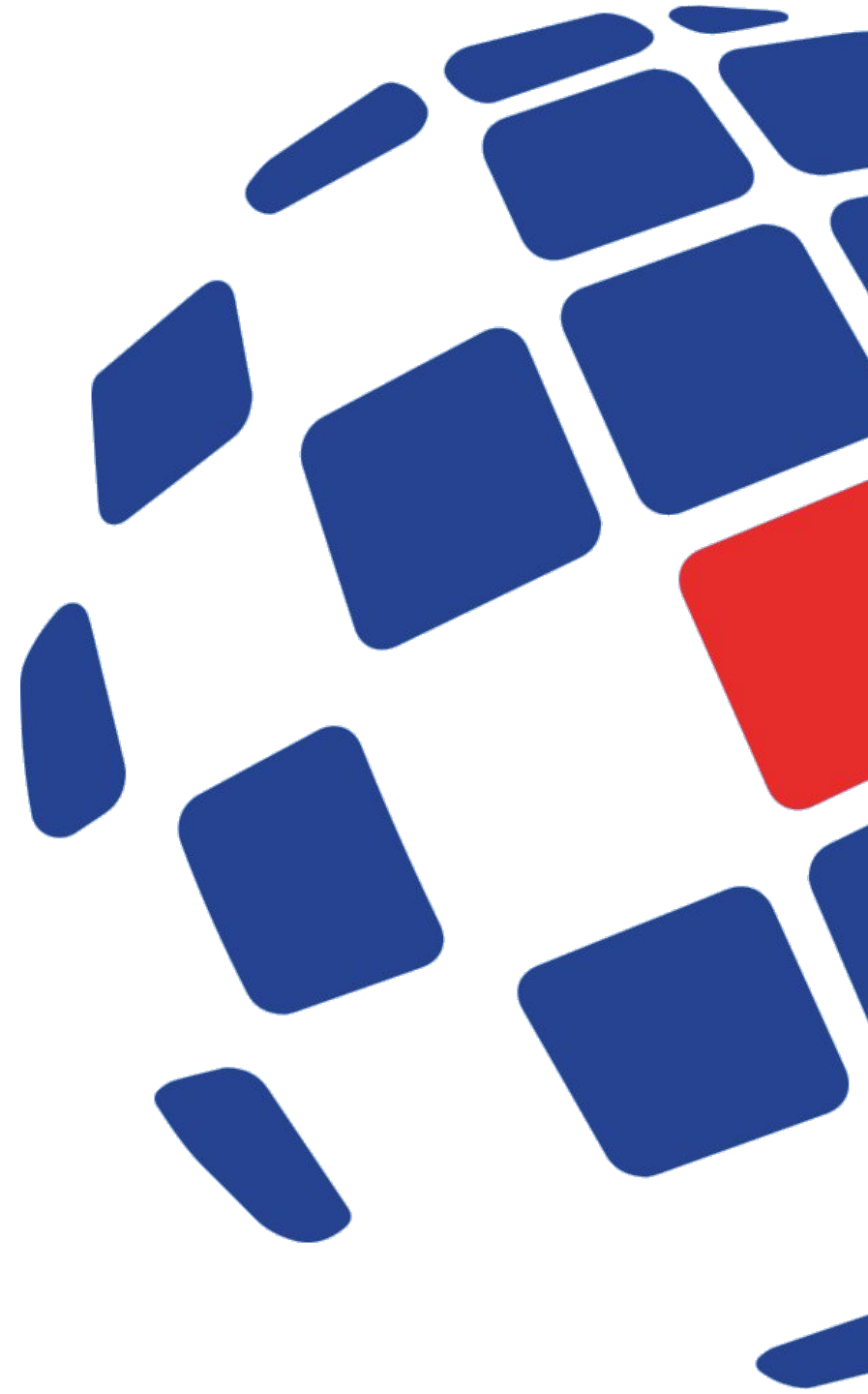




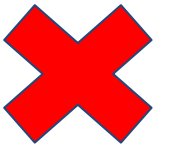
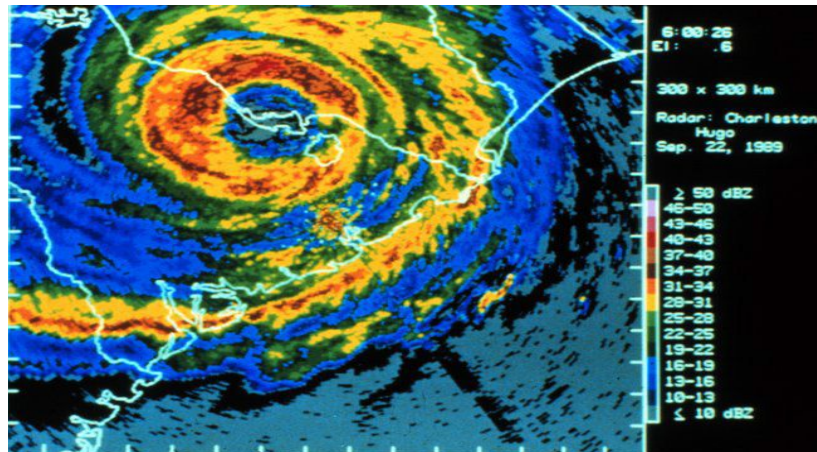
October 2023 - Saint Kitts and Nevis

# Introduction to Raster Data



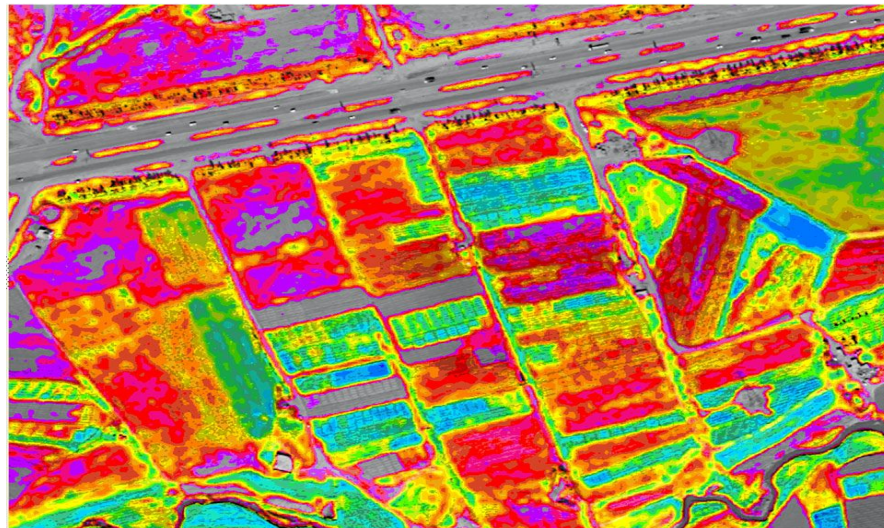
# Introduction

- Introduction to Raster Data
- How this can be viewed in QGIS
- How to customize raster styling

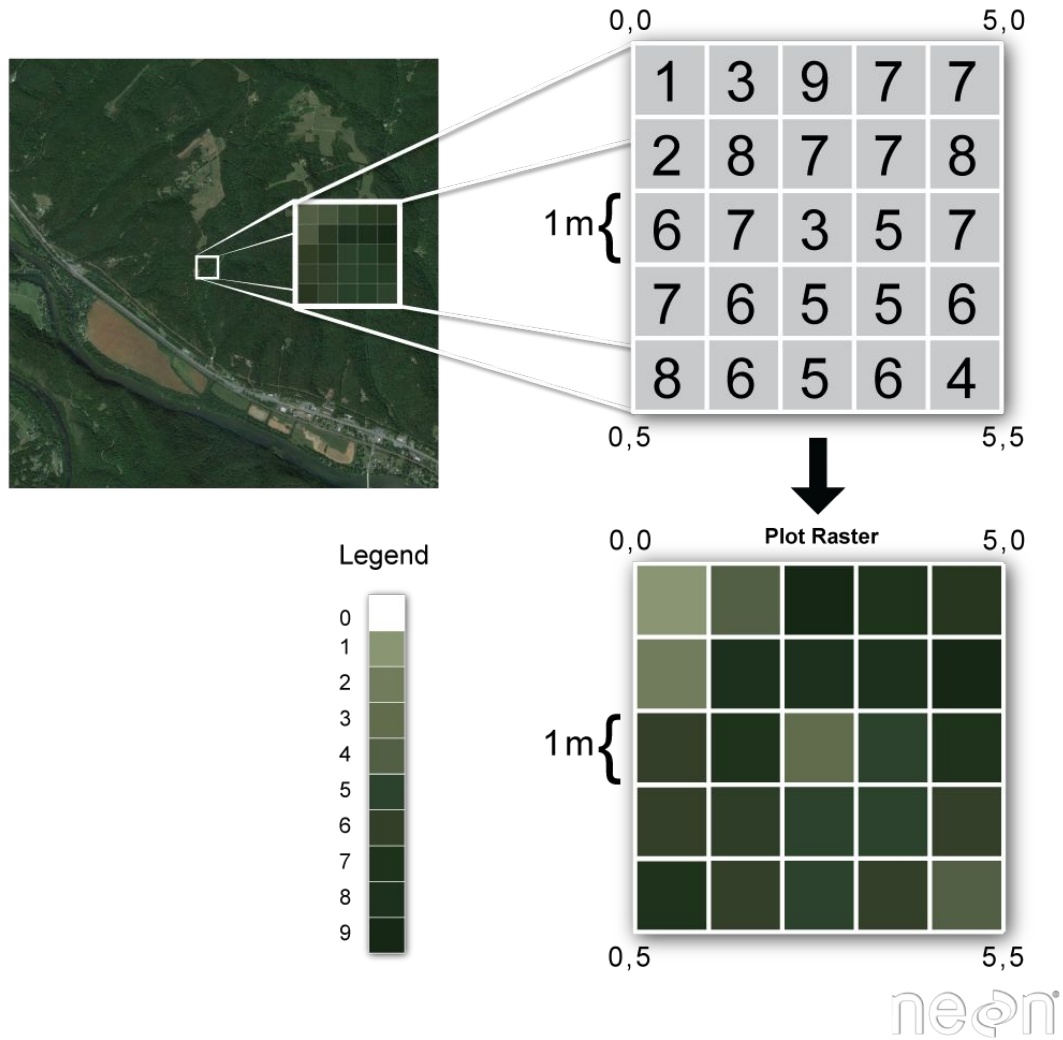


# Raster Data

- Raster data are images that show a continuous area of the earth's surface.
- Scale, position, and orientation information allow raster data to be presented in QGIS.



# Raster Data

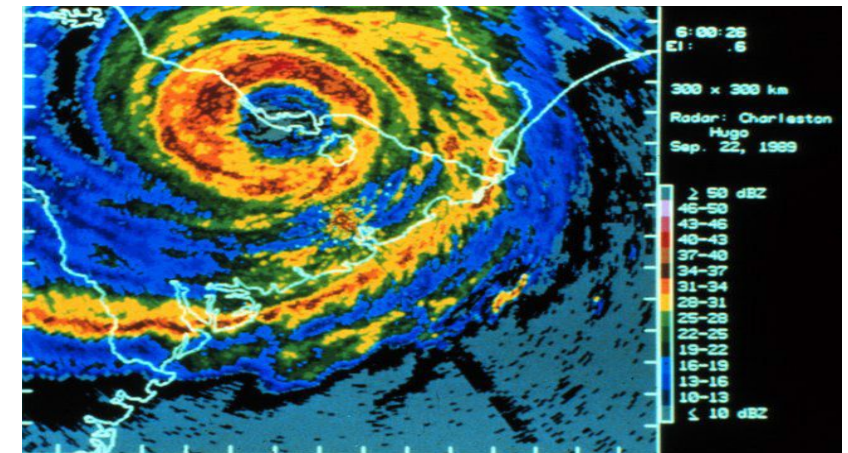
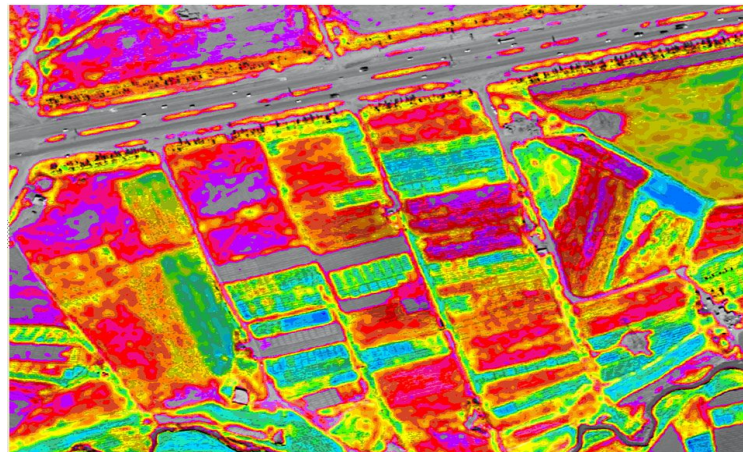
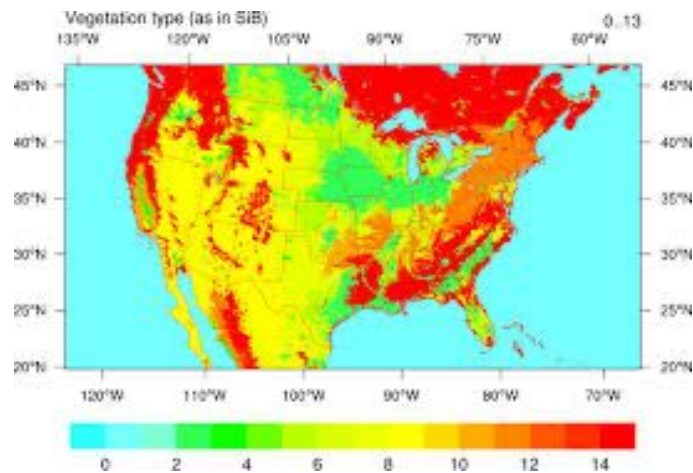


- Raster data are made of pixels over an area
- Each pixel contains value data, coloured according to the GIS legend
- The different values may tell you something about the location.



# Raster Data Example (1/3)

- Vegetation cover type
- Surface wetness map
- Air moisture



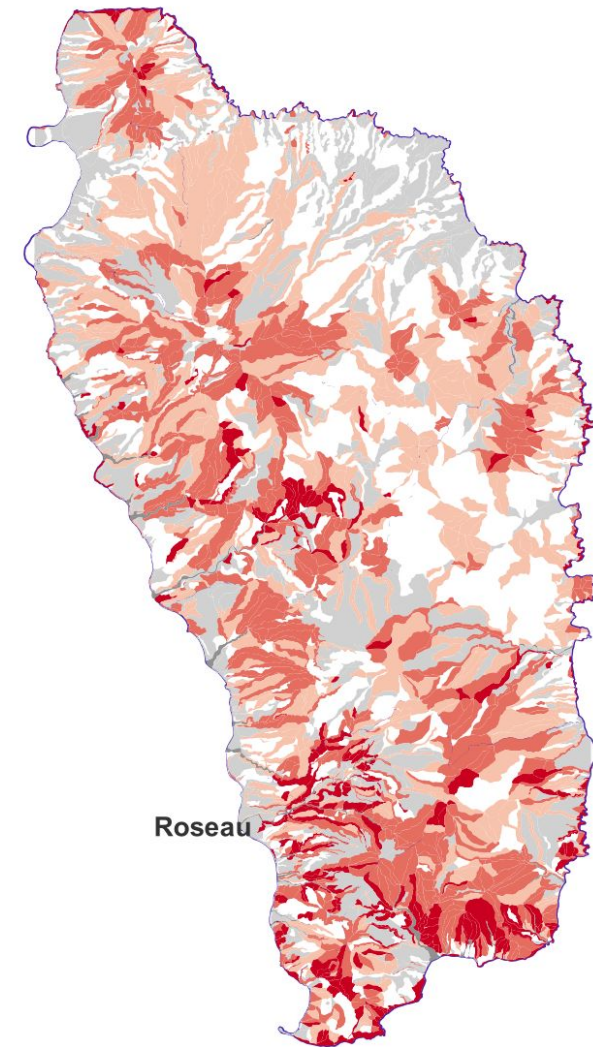
# Raster Data Example (2/3)

- Digital Elevation Model (DEM)
- Slope steepness and aspect (hill shading)



# Raster Data Example (3/3)

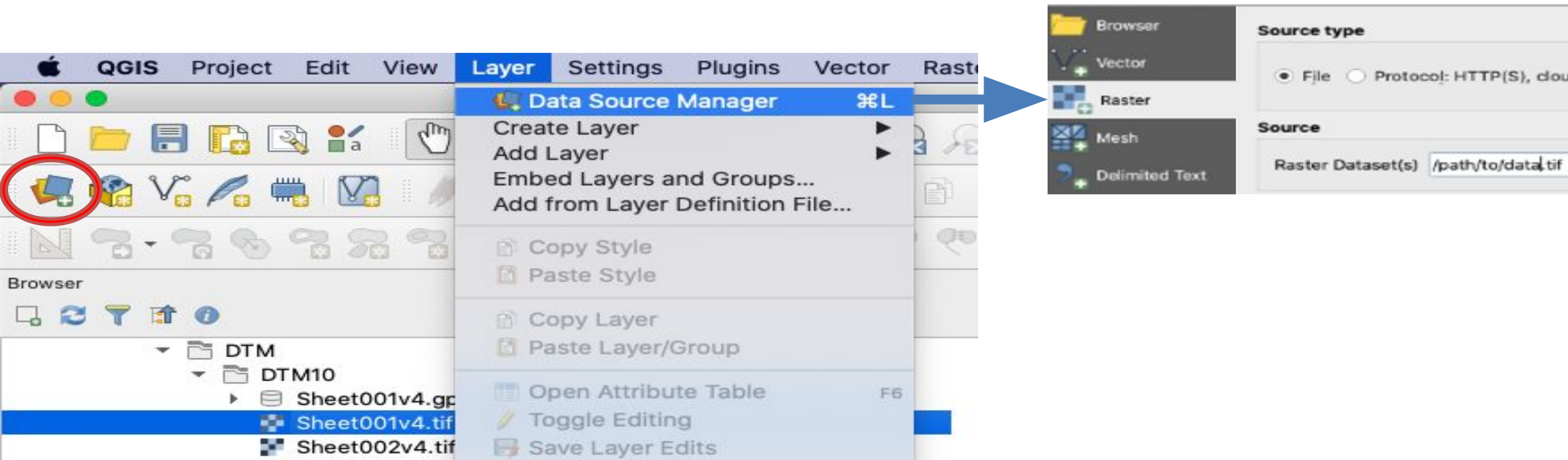
- Landslide Hazard Map
- Slope steepness and aspect (hill shading)





# Loading Raster Data into QGIS

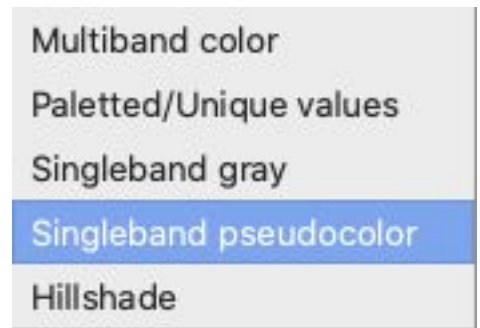
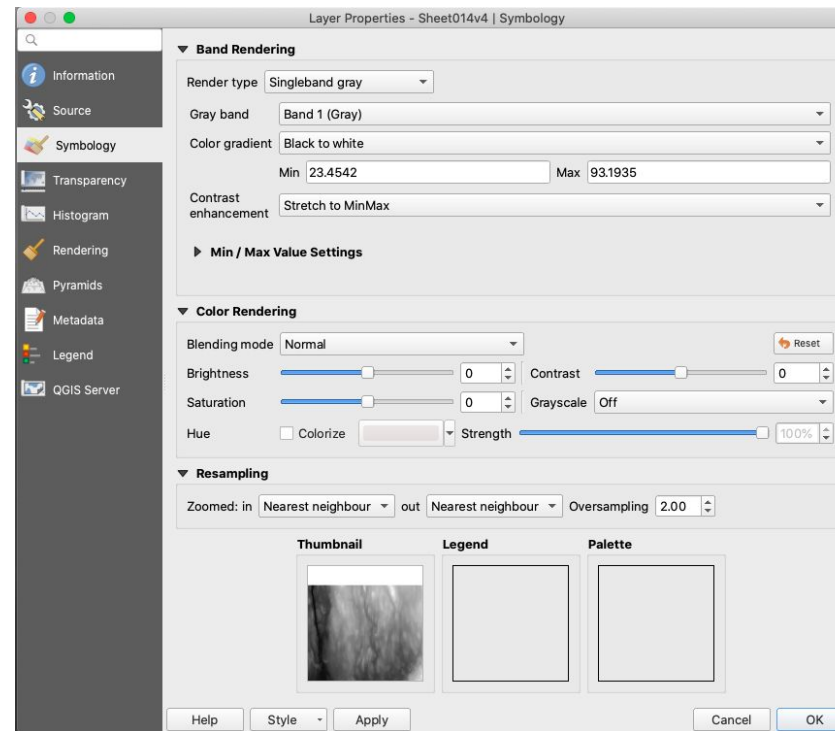
- Add raster layers using the Data Source Manager
- Point to the file on your system





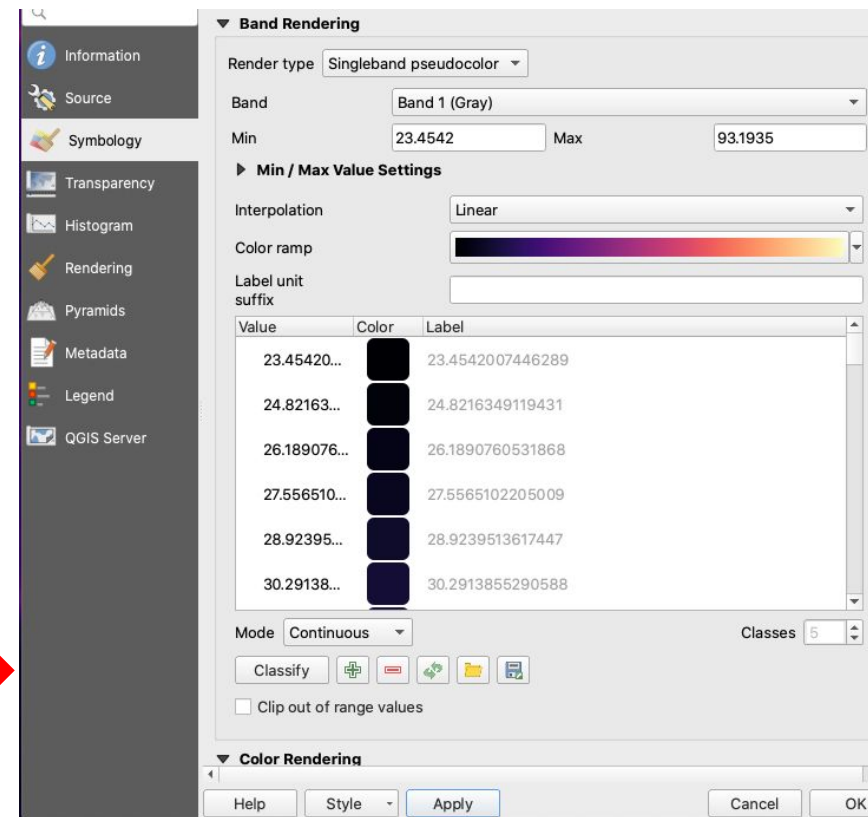
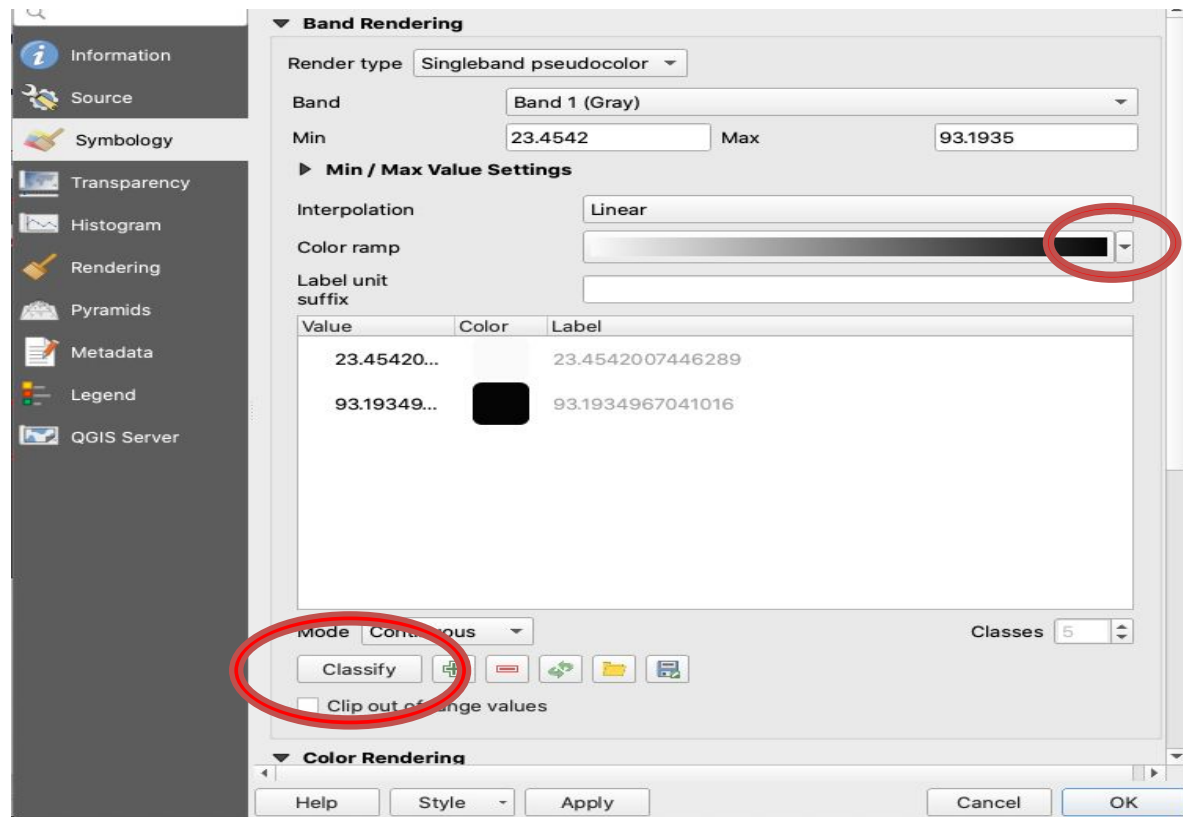
# Styling Raster Data (1/3)

- Raster data can be coloured through Layer Properties



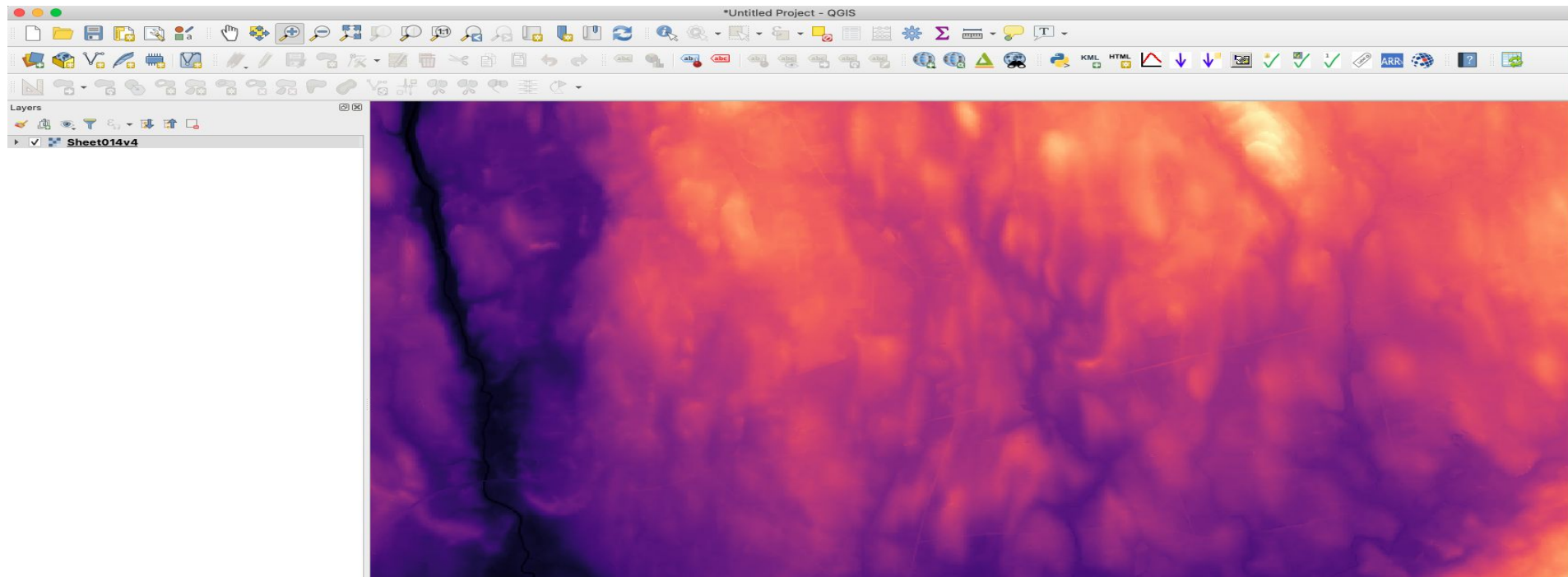
# Styling Raster Data (2/3)

- Select Color ramp – select a colour range
- Select Classify to reload the data with new style



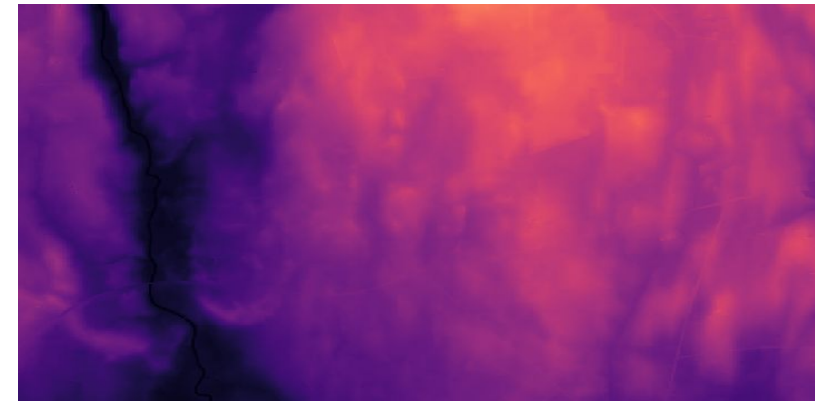
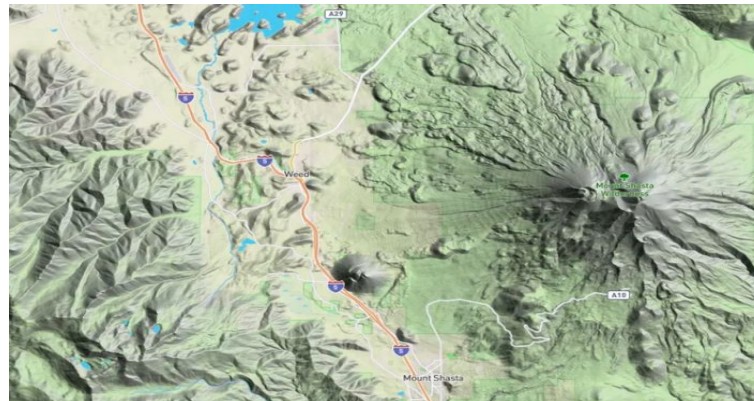
# Styling Raster Data (3/3)

- A new colour ramp has been selected
- Low elevations are black and high elevations are orange



# Conclusion

- Introduced to Raster Data
- How this can be viewed in QGIS
- How to customize raster styling





This programme is  
gratefully supported  
by



**USAID**  
FROM THE AMERICAN PEOPLE





# MAP ACTION

[mapaction.org](http://mapaction.org)